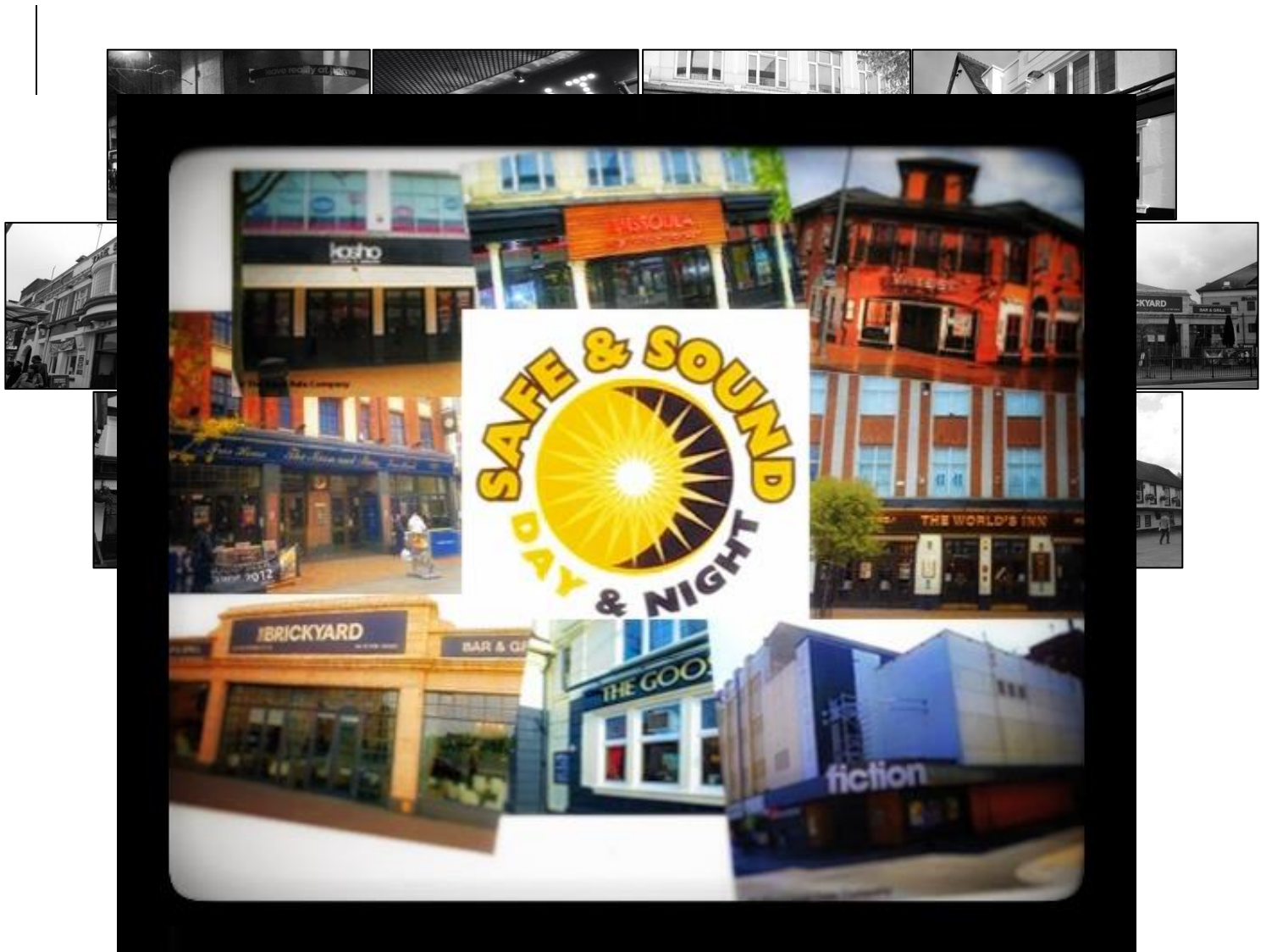


Havering Community Safety Partnership

Safe & Sound: Reducing violent crime in the night time economy



**Havering Community
Safety Partnership**

Agency and Roles Information

Project Team Members

- Community & Voluntary, Street Pastors
- Community & Voluntary, The Deeper Lounge
- Havering Safe & Sound Business Partnership (business community)
- London Borough of Havering, CCTV Centre
- London Borough of Havering, Community Safety Unit
- London Borough of Havering, Planning and Regeneration
- London Borough of Havering, Public Health
- London Borough of Havering, Trading Standards and Licensing
- Metropolitan Police, Licensing Team
- Metropolitan Police, Romford Town Centre Team
- Metropolitan Police, Safer Transport Team (Transport Hub based officers)
- London Ambulance Service and St John's Ambulance, Street Triage
- Security Industry Authority, Door Supervisors
- Transport for London, Marshalled Taxi Rank

Project Author / Contact

Name: Iain Agar

Position: Community Safety Analyst

Phone: 01708 432 928

Email: IAIN.AGAR@havering.gov.uk

Address

Community Safety Team

Havering Town Hall

Main Road

Romford RM1 3BB

Greater London

England

Summary

Scanning

- In response to urban decline, Romford Urban Strategy encouraged growth of late night venues, leading to increased night-time violence. Most violence occurred during 9pm-6am Fri/Sat
- At 2009/10 Romford had the highest rate of violence per 100,000 visitors of all Metropolitan Centre's regionally, experiencing a 27% rise in police reported violence over the previous three years and a 16% rise in ambulance assault patients
- The media publicised Romford's reputation for violence in the region
- Surveys showed 37% of residents thought drunk and rowdy behaviour was a problem 55% of residents felt unsafe after dark
- The socio-economic cost was estimated at £5.1m (\$8.1m)

Analysis

- 18-29yr males were disproportionately represented as victims/offenders, whilst qualitative research found an overwhelming proportion had consumed high levels of alcohol (85% of victims)
- Analysis demonstrated a clear link to alcohol, involving persons unknown to one another
- Key issues identified included inadequate safeguards for intoxicated persons, irresponsible drink pricing (encouraging bingeing and pre-loading). Previous responses focused on detecting offences late rather than removing potential offenders, no fear of consequences, unregulated space and bottle necks in the street and high volume of premises closing together forcing everyone to leave together encouraging confrontations
- Glass/bottle injuries generating a higher cost to services and risk to victims

Response

- Response developed through the Safe & Sound partnership group, involving key stakeholders
- Extended guardianship and safeguards to victims/potential victims through an effective radio link between: licensed premises, CCTV operators, police, street pastors; Safe Haven, and Street Triage operators.
- Licensing conditions to control tools and weapons (glasses and bottles); ban irresponsible drinks promotions and restrict adverts on heavily discounted alcohol
- 'Barred from one, barred from all' (licensed premises) scheme, to block the opportunity to recidivist offenders.
- Use of CCTV and ScanNet to strengthen surveillance and increase detection of offenders
- Licensing controls required for outside spaces and redesign of street scene
- Staggered/extended hours to assist crowd dispersion

Assessment

- 29% reduction in ambulance call-outs for injuries/illness which can now be treated at triage
- £437k (\$688k) annual saving from reduced assaults involving glass/bottles
- More than 215 barred from entering town for periods of 3-weeks to 5-years
- Increase in proportion of offenders identified, increased detections, increasing confidence with more victims willing to proceed allegations
- 58% reduction in NTE violence since 2009/10
- Total socio-economic savings of £3m/\$4.7m

Words: 378

List of Figures and Tables

Figures

Figure 1	Map showing late night street crime hotspots in Greater London region (source: Metropolitan Police)
Figure 2	Chart showing rate of violence in Metropolitan Centres within Greater London 2009-10 (source: Metropolitan Police data and Greater London Authority day-time population estimates)
Figure 3	Chart showing outcome of assault patients attending emergency departments of hospitals in Havering 2012-13
Figure 4	Chart showing violence by time-period in Romford Town Centre 2008-2010 (source: Metropolitan Police recorded crime data)
Figure 5	Photo showing the Deeper Lounge stall, before its move to a permanent venue
Figure 6	Photo showing SIA door security staff in Romford Town centre
Figure 7	Photo showing Havering Street Pastors on patrol in Romford Town centre
Figure 8	Graphic showing a barred from one, barred from all poster, warning potential trouble makers of consequences
Figure 9	Photo showing the control and monitoring room for Havering's CCTV centre
Figure 10	Photo showing 'defensible space' design outside a licenced venue
Figure 11	Map showing zones of temporal activity within Romford town, managing close down
Figure 12	Photo showing taxi security at marshalled taxi rank
Figure 13	Chart showing London ambulance call-outs for alcohol related illness in Romford Town night time economy (source: London Ambulance Service call data)
Figure 14	Graphic of local newspaper headline publicising our work
Figure 15	Graphic showing before and after concentration of violence in Romford Town
Figure 16	Chart showing rates of NTE violence per 100,000, Romford compared with average (LAS Data)

Tables

Table 1	London Ambulance Service, alcohol related call-out data for Romford 10pm-4am
Table 2	Table showing overall change in combined police and ambulance assaults within Romford Town's night time economy
Table 3	Socio-Economic Cost changes in violence/assaults

Scanning

In the mid-1990's South Street running through Romford Town Centre (RT), located within Havering, was in severe urban decline and considered by some a no-go area after dark. The council devised a 10-year urban strategy, which coincided with the introduction of relaxed local planning policies, leading to the development of new food and drink businesses. Romford's Urban Strategy addressed problems of urban decline, making the town home to 41 restaurants, 21 bars/pubs and 4 nightclubs. Allowing growth in availability of late night venues benefited the borough immensely, economically and socially.

However, this brought about different challenges – RT became synonymous with night-time violence and disorder linked to its burgeoning night-time economy (NTE) attracting 11,000 visitors every Friday and Saturday night. By 2009/10:-

- RT had the highest rate of violence with injury (assault, also referred to as VWI) per 100,000 visitors of all Metropolitan Centre's regionally (*based on GLA estimates for day/night time populations*).
- RT ward was 2nd highest volume location for violence against the person in the entire London region, behind the West End/St James area.
- RT experienced increases in Violence against the Person of +27% (697 recorded crimes, more than half being assault and wounding) over the preceding three-years, contrasting with an overall decline overall crime and violence across Havering.



Figure 1 Late Night Street Crime Hotspots (Source Metropolitan Police)

Safe & Sound: Reducing violent crime in the night time economy

- London Ambulance Service (LAS) data also showed an increase of +16% (185) in the number of patients treated for assault injuries in the same period. The number of LAS assaults in RT in 2009/10 was the second highest of the decade.

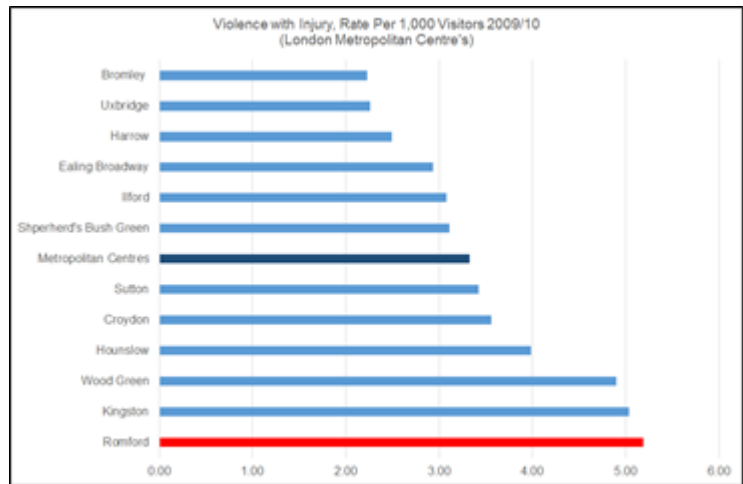


Figure 2 Rate of Violence in Metropolitan Centres 2009/10 (Source Metropolitan Police crime data and GLA Workday population estimates)

Violent crime was identified as a strategic priority for the Havering Community Safety Partnership. Furthermore, demand for change was also evident from other sources.

- Local newspapers highlighted Romford Town's position as one of the highest volume locations regionally for violence.
- Results from the Metropolitan Police Public Attitude Survey showed 37% of residents thought drunk and rowdy behaviour was problematic locally (approx. 1,920 respondents, 12-months to July-09).
- A Market Research UK survey conducted for Havering showed just 55% of residents felt safe after dark.

Not all violent crime in RT occurred within the night time economy (NTE). However, the 9pm-6am periods of a Friday/Saturday night in RT, in effect 10% of hours in a week (18/168), is when 55% of all violent crime occurred – an acute temporal pattern and a significant overrepresentation (80-20 rule). One hypothesis was that the rise in violence, and disproportionate amount in NTE periods, may just be the result of an increased night time population.

Safe & Sound: Reducing violent crime in the night time economy

According to the Home Office (2011), the average socio-economic cost of assault is £9,970 whilst a serious assault is £25,747. After Homicide and Rape, these are the two costliest crimes to society. In 2009/10 the socio-economic cost of assault in RT was £5,178,910 (\$8.1m). Triangulation of Police and LAS data showed 75% of patients treated for assault injuries did not report to police, these victims contributed a further £41,000 (\$65k) in LAS call-outs (estimated average of £300/\$472 per call).

Furthermore, the Crime Survey for England & Wales 2012/13 (CSEW) found that 89% of wounding victims are emotionally affected, whilst health consequences can include loss of confidence and fear (39% of victims), insomnia (33%), anxiety or panic attacks (28%) and depression (15%). Local hospital data found that 6% of victims required a hospital stay and over a quarter (26%) later sought medical attention from a healthcare professional for physical injuries. This demonstrates the impact of violence continuing to affect victims and services beyond the initial event.

A problem profile was produced by the police and council with a renewed focus on assault in the NTE to identify in-depth issues that could be addressed using an intelligence-led approach.

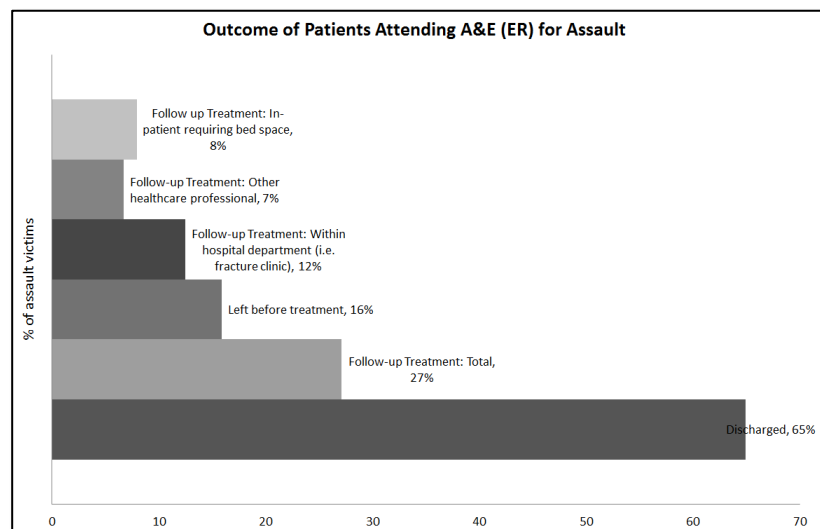


Figure 3 Outcome of assault patient data for those attending Accident & Emergency departments (ER) in Havering 2012-13

Words: 624

Analysis

Victim-offender-location analysis is based on assault offences recorded by police and LAS assault data. . It should be noted that triangulation of LAS Assault and police assault data found just 1 in 4 LAS patients treated were represented within the police data, highlighting a high level of underreporting of NTE violence (40% of all recorded violence went unreported to police).

Other data sources used qualitative analysis of officer statements, details of investigations reports, feedback from businesses and frontline workers from multiple agencies.

Romford's NTE attracts 11,000-15,000 18-24 year olds on Friday/Saturday. Findings from the Youth Lifestyle Survey (Richardson et al, 2003) found 39% of 18-24 year olds partaking in the NTE were classified as 'binge drinkers', with men (48%) more likely to binge drink than women (31%). The survey found binge drinkers were more likely to offend than non-binge drinkers, and links between drinking and offending was particularly strong for violent crime.

Analysis of police officer statements revealed a consensus that issues were exacerbated by irresponsible drinks promotions, which encouraged drinking to excess. Many premises in Romford offered promotions such as 4 drinks for £6 (\$10), or £1 (\$1.60) per drink for selected spirits, beers or ciders for example. Flyers were handed out by various establishments detailing drinks promotions and offering a free drink or shot on entry in some cases. From midnight onwards officers reported large numbers of drinkers being rowdy whilst intoxicated, with others being sick or sleeping in South Street.

These persons were the victims and offenders, by being intoxicated or in the company of those who'd consumed relatively large amounts of alcohol, they had the greatest exposure to risk and highest likelihood of becoming victims of alcohol-related assault.

Victims

Safe & Sound: Reducing violent crime in the night time economy

Victims are predominantly between the ages of 18-29, consistently between 80-90% of victim's year-on-year (police trend consistent with LAS data). In 2009/10 59% were aged 20-24, 18% 25-29 and 15% aged 18-19. Males were most likely to report victimisation, accounting for 88% of victims reporting to police and 90% of assault patients attended to by LAS.

Qualitative analysis of crime reports found the victim had consumed alcohol in 85% of cases and in 58% they could not remember the circumstances leading to violence. This clearly demonstrates that violence is linked to alcohol and not just the population.

The most common reasons for violence, where given, were:

- Unknown/cannot remember/victim was severely intoxicated 58%
- Domestic or familial dispute 13%
- Male victim targeted after speaking to girlfriend/partner of another male 12%
- Victim bumped into suspect/spilled suspect drinks 10%
- Argument began whilst queuing for travel/takeaway 5%
- Both victim/suspect ejected from premise at same time, violence continued in street 2%

Half of victims are local residents, a third from neighbouring Barking & Dagenham and the remainder come from other boroughs or police force districts. Offences typically involved strangers and people who didn't know each other intimately. LAS data showed the most common assault injuries to be:

- Head Injury 35%
- Cuts and bruising 27%
- Laceration (weapon wound) 14%
- Fracture 5%

Safe & Sound: Reducing violent crime in the night time economy

- All other injuries 19% - includes eye injury, abdominal pains, chest pains and concussion

Lacerations caused by bottle/glassing wounds were split evenly between premises (where bottled drinks were served), or whereby bottled drinks brought into town had been left in the street which later were picked up and used as weapons. Whilst lacerations from bottles/weapons accounted for less than 1 in 5 offences, the socio-economic cost is disproportionately higher due to the more serious nature of injuries sustained.

Offenders

Between 85-90% of offenders year-on-year had been 18-29 (2009/10 showed 45% as 20-24, 23% as 18-19 and 19% as 25-29). Just fewer than 85% were male. Only 15% involved persons known to one another, the vast majority of which were domestic or familial disputes. The remaining offences could be classified as stranger violence.

Qualitative analysis of crime reports found in all cases where the victim recalled the event, they believed the suspect had been drinking, (90% of cases involved a suspect and/or victim that had been drinking in 2009/10).

A police 'Viper Car' was in place from 10pm-3am in Romford to provide a visible presence and to deter violence. However, much of their time would be taken up dealing with prisoners in custody after making affray arrests early in the evening, leaving the town without guardianship.

In terms of investigation and outcome, most suspects were not identified (40%), therefore the risk to offenders was minimal. Of those identified, a third had committed a similar offence previously often resulting in a police caution. For half of suspects it was their only offence on police record – therefore, any response from this point is simply too late.

Locations

Safe & Sound: Reducing violent crime in the night time economy

Two-thirds of offences occurred in the street, and a third within premises. In terms of venue setting, 33% were inside or immediately outside of a licensed club, 21% were inside or immediately outside a public house, 11% were within a bus terminal, taxi rank or within a taxi cab office and 9% were inside or immediately outside a takeaway premise. The remaining 26% occurred in the street away from late night venues.

The chart shows the distribution of VWI offences from 2008-2010, the periods of 9pm-6am are also mapped below, showing the distribution of offences by 20m grid square.

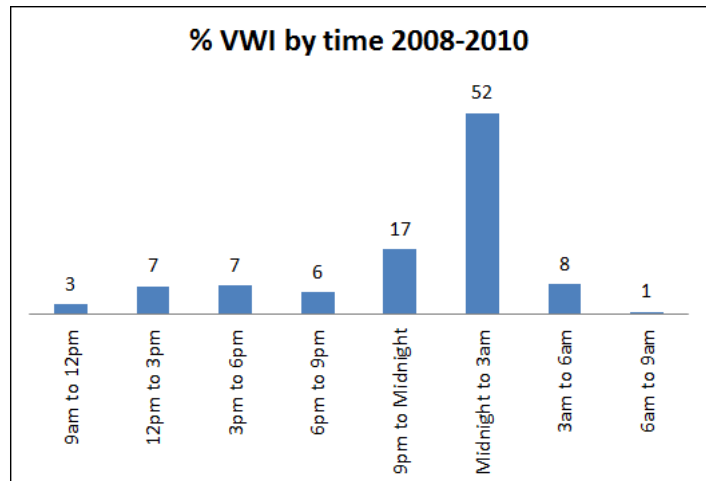


Figure 4 Violence by time frame in Romford Town

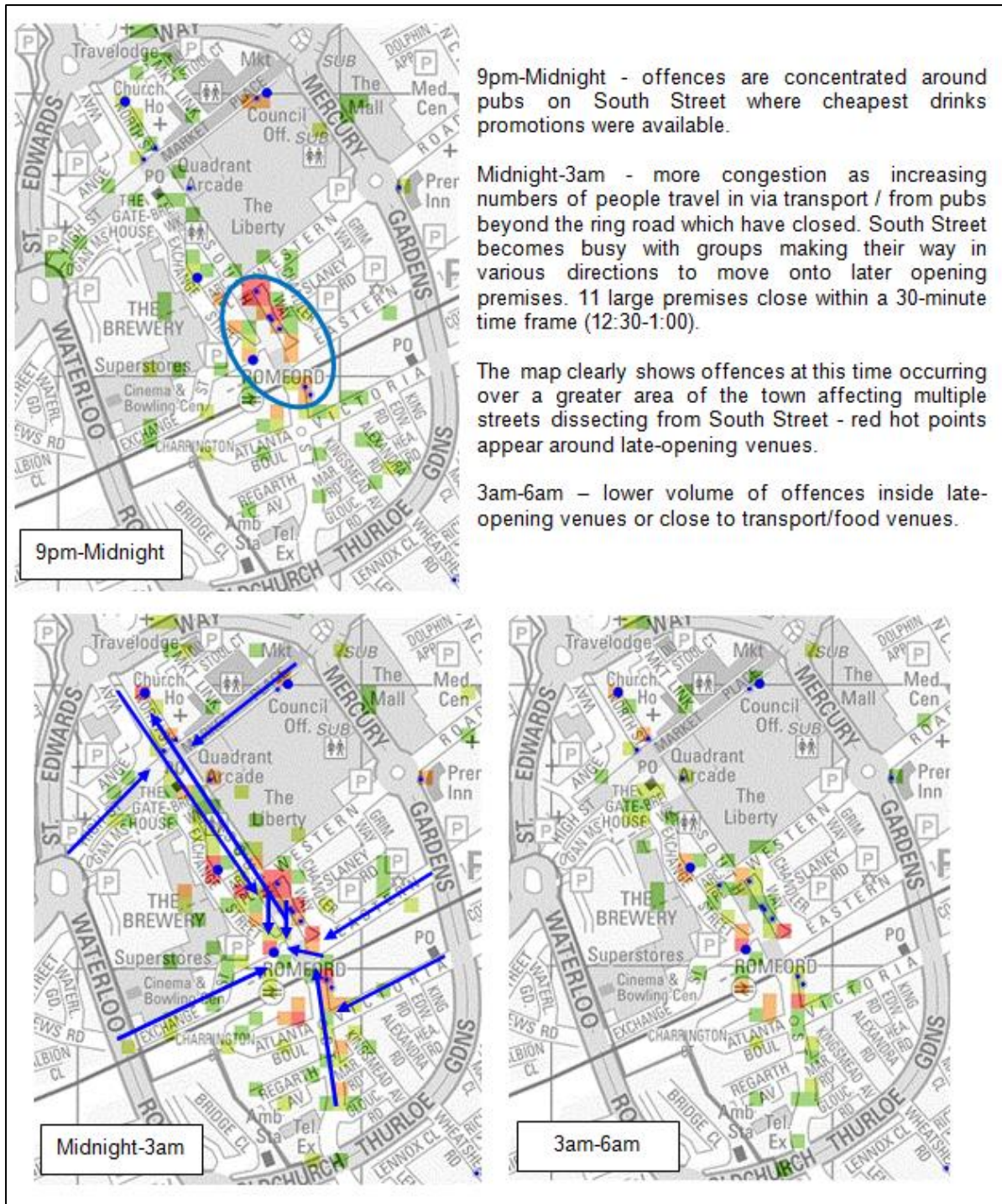


Figure 5 Maps showing the concentration of offending by time periods within the night time economy in Romford Town

Key problems identified from the analysis, contributing to the problem:

- Inadequate safeguards against people who are intoxicated (victims)
- Higher cost to services, and higher risk of injury from glass bottles (victims)
- Customers entering already intoxicated, including pre-loaders (potential victims/offenders)
- Current direction of activity tends towards activity to detect offences late rather than remove potential offenders (or victims) at an early stage (offenders)
- There is no fear of consequences of behaviour (offenders)
- Unregulated space and street furniture in South Street creates a bottleneck where different groups can come head-head-to-head (locations)
- The closing time of licensed premises mean all people leave together (locations)
- There is insufficient transport to remove people at the end of the night, and limited alternatives whilst waiting (locations)

The Safe & Sound (S&S) group target was to reverse the 23% increase over 3-years

- Reduce police and LAS assault by 25% between 2009/10 and 2011/12
- From 2011/12 in line with MOPAC 7, a further target to reduce violence by 20% by March 2016 was set

Words: 1,065

Response

Whilst previous responses hadn't reduced violence (*educating people about responsible drinking had no immediate impact; saturation policing was rendered ineffective as officers were soon removed to deal with those arrested*); there were successes in other areas of S&S. Best Bar None initiative improved the relationships between licensed trade, police and local authority; worked to improve standards within premises (although most problems were outside); and rewarded best practice.

S&S had brought together numerous key stakeholders to meet once a month:

- Late night venues/licensed premises (*all have licensing condition to attend S&S meeting*)
- Safer Transport
- Street Pastors
- Door security
- Community Safety
- Police
- CCTV
- Licensing
- Trading Standards
- Regeneration
- Streetcare
- Taxi-Marshall Scheme

Safe & Sound: Reducing violent crime in the night time economy

This group of stakeholders have contributed to further developments in Havering's response to NTE violence.

Victims – safeguards against people who are intoxicated

Guardianship was extended to protect victims through a radio-link system so door supervisors from all premises, CCTV operators, police and street pastors (40-strong NTE team) could communicate throughout the evening (i.e. CCTV help street pastors locate vulnerable people in the street/side streets; door supervisors can call street pastors to assist vulnerable people).

A Safe Haven (The Deeper Lounge) was created to provide a safe space, refreshments and help from 10pm to 3am, run by volunteers working with Street Pastors and St Johns Ambulance. Vulnerable people can be brought to the facility (remove targets) to sober up, get medical assistance for alcohol related illness, or to ensure they can be picked up by a



Figure 5 Original Deeper Lounge gazebo, before moving to a permanent venue

relative or returned home safely (using the marshalled taxi rank). It started from beneath a large gazebo (Dec-09) and moved to a permanent premise in High Street Romford (Apr-12).

Additionally, door supervisors, who tended to wear all black, were bought hi-visibility jackets with the premise names on the back in order to reduce anonymity and make them more identifiable to other frontline workers and people in need of help.



Figure 6 SIA Door Supervisors with premise names

Safe & Sound: Reducing violent crime in the night time economy

In 2013 MOPAC funding was used to introduce a street triage in South Street, run by St John's Ambulance (2 medics and volunteers) operating from 10pm-4am. Providing similar safeguards as the Deeper Lounge, with the added aim to reduce ambulance call-outs for alcohol-related injuries and illnesses.

Victims – risk of more serious injury from glass

License conditions on premises were used to control tools and weapons in the form of glasses/bottles. All premises must serve all drinks in toughened/polycarbonate glasses, including bottled drinks which must be poured. Premises are not allowed to remove waste, including bottles, between the hours of 11pm and 7am to prevent outdoor waste/bottles being used as a 'weapon cache'.



Figure 7 Street Pastors on patrol

Patrolling street pastors ensure that any bottles brought into town and left in the street are picked up and safely secured throughout the evening.

Victims/Offenders – customers are entering already intoxicated

In April 2010 new mandatory licensing conditions helped us work with premises to ban irresponsible drinks promotions (Inc. flyers/posters) offering multiple drinks at fixed prices or all you can drink for a fixed price, which drinkers and frontline staff believed encouraged binge drinking. This removes excuses for binge drinking.

Competition by bars meant many offered certain drinks for as little as £1 (\$1.60). An agreement was made between premises at S&S to raise this to £1.50 (\$2.40). Premises also began using advertising

boards in the middle of South Street to detail drinks available at £1.50. This was likely to offset the impact of banned promotions.

Regeneration/Highways used council legislation to prevent this – applications for a license for advertising boards in the highway. This restricted premises to use of advertising boards only within the vicinity of the doorway, making them less visible.

Offenders – current direction of activity tends towards detecting offences late rather than removing potential offenders

In Oct-10 the ‘barred from one barred from all’ scheme was launched. Whilst bans may be given to offenders for violence, wider use targets behaviour which may be seen as an indicator of violence (i.e. threatening posturing, abusive language, confrontational). The scheme removes excuses for poor behaviour and can deny drinkers the right to enjoy Romford NTE for a fixed period as determined by S&S. By addressing poor behaviour potential offenders are removed before the opportunity for violence occurs.

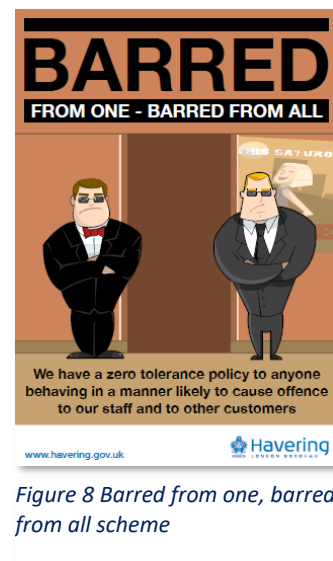


Figure 8 Barred from one, barred from all scheme

The scheme increases the risk to potential violent offenders by reducing their anonymity within the NTE, ensuring they adhere to bans.

Details of banned persons, including photos, are shared at briefings which take place every Friday afternoon. All door supervisors, frontline workers and volunteers, CCTV operators and premise staff are aware of banned persons and therefore able to report/deal with breaches. Continual breaches would be addressed using a civil injunction or obtaining an ASBO.

Offenders – no fear of consequences

As previously mentioned, extended guardianship through the link-radio served to protect victims but also increases risk to potential offenders as their details/description could be quickly circulated to all partners including other premises and CCTV operators. Strengthened formal surveillance in the form of CCTV comprises more than 70 cameras, ensuring that police can be guided to offenders for arrests and evidence can be captured. Eight body cameras were also purchased for use by officers working the NTE.



Figure 9 CCTV Operating Room Romford

From 2012 licensing applications and/or reviews of on-license premises in Havering have included mandatory use of ScanNet/ClubScan (for nightclubs). This has been extended to bars/pubs. Conditions refer to entry during SIA door staff hours (9pm-close) where there will be 'No Entry' unless identification has been scanned (increasing effort through controlling access). Customer identifications are scanned and photographs taken on entry, therefore significantly increasing the risk of identification and sanction. If an incident occurs within a premise a list of all customers/images can be used to identify a suspect. If the incident occurs in the street CCTV operators can attempt to locate the last premise exited by the offender.

Barred from one barred from all also serves as a direct consequence of poor behaviour and/or violence within the NTE (increases effort - controlling access to facilities; increasing risk - reducing anonymity and utilising place managers; reducing rewards - deny benefit of participating in NTE; removes excuses post-ban).

Safe & Sound: Reducing violent crime in the night time economy

Locations – South Street bottleneck where different groups come head-to-head

Planning/regeneration using prevention through design and licensing conditions regarding the management of space outside premises has contributed to increasing the effort, increasing the risk and reducing provocations:

- Removal of street furniture, trees and other 'clutter' to assist natural surveillance and prevent crowding to avoid disputes between groups
- License required for tables/chairs outside venue, and front smoking areas to be fenced-off to further prevent crowding into the



Figure 10 'Defensible space'

street. Requirement that door supervisors control access and screen exits to these areas.

Locations – closing time means all people leave together

11 premises closed 0030-0100, 8 premises remained open until 0300 with capacity for approximately 6,000. This contributed to the aforementioned bottleneck, increasing frustration, stress and disputes. Whilst management/design of outside space could lessen the impact, licensing could assist further by staggering closing/last entry times. NTE shutdown can then be managed gradually rather than attempting to disperse everyone at once. The map below illustrates the shutdown of premises into manageable areas.

Locations – limited transport and facilities at the end of the night

Encouraging two club premises to remain open till 4:30, and two restaurants to remain open till 05:00, to coincide with normal service resuming on public transport, reduces the frustration/stress

Safe & Sound: Reducing violent crime in the night time economy

on taxi's between 02:00-04:00 and provides safe managed spaces for customers, some of whom previously might have slept in the street, bus terminal and on now removed street furniture.

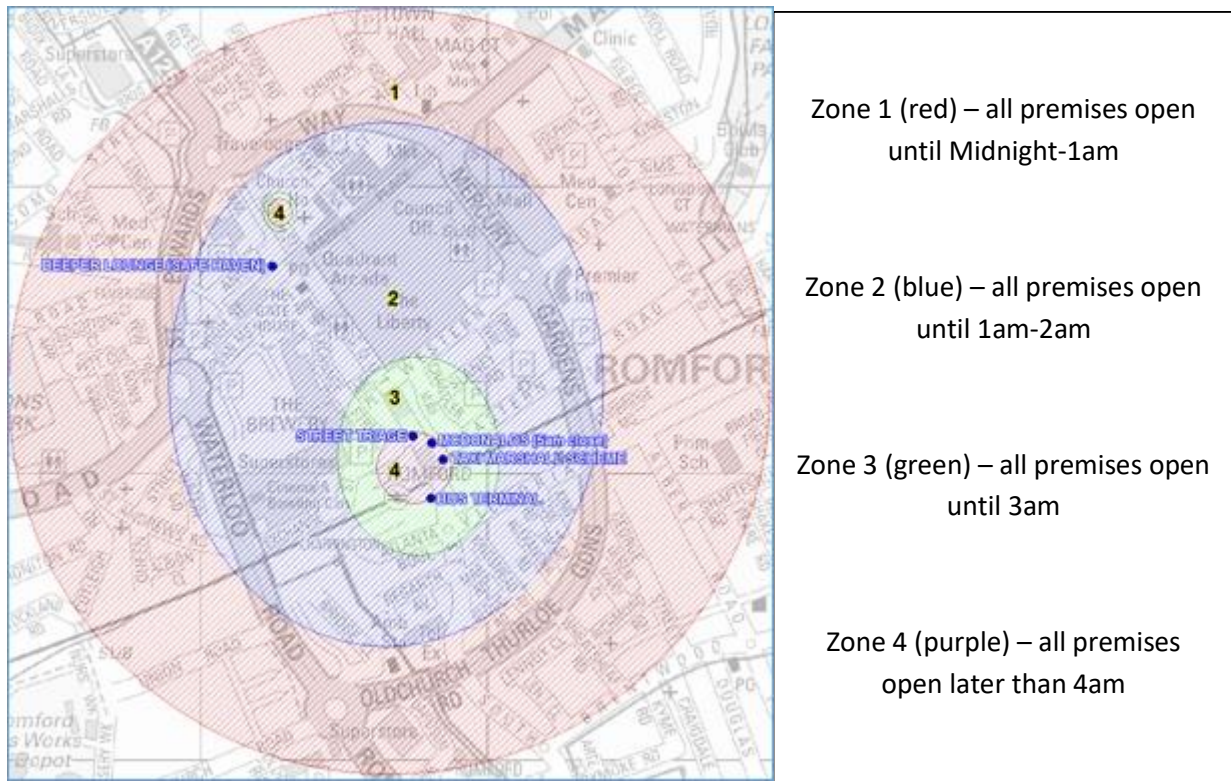


Figure 11 Zones of temporal activity within Romford town

Words: 1,290

Assessment

Safeguards

The Deeper Lounge, and more recently with Street Triage, are able to treat alcohol-related injuries/illness on site to reduce ambulance call-outs to South Street. Approximately 10 persons per month are treated on site. Referrals come via:

- 57% of patients were referred by door supervisors using radio link
- 8% of self-referred
- 5% found in the street by Street Pastors
- 85% are received after midnight, 44% received after 3am.

Previously half of these patients would've been called an ambulance or attended A&E. Injuries that cannot be treated on site are still referred to LAS. Where persons identified don't treatment but are severely intoxicated a relative (usually parent) is called to pick them up, or they're helped into a marshalled taxi.

The late night taxi marshal scheme has completed an average of 1,000 journeys each weekend since 2009.

Call-outs only began to fall when a permanent base was found for Deeper Lounge – located in High Street, a 5minute walk north of the main concentration of bars.

The introduction of triage within the main hotspot has coincided with a marked reduction with capacity for more patients to be treated on site (at reduced cost freeing up emergency services).



Figure 12 Marshalled Taxi Rank

Safe & Sound: Reducing violent crime in the night time economy

Figure 13 London Ambulance Service, alcohol related call-outs from 10pm-4am, Romford Town

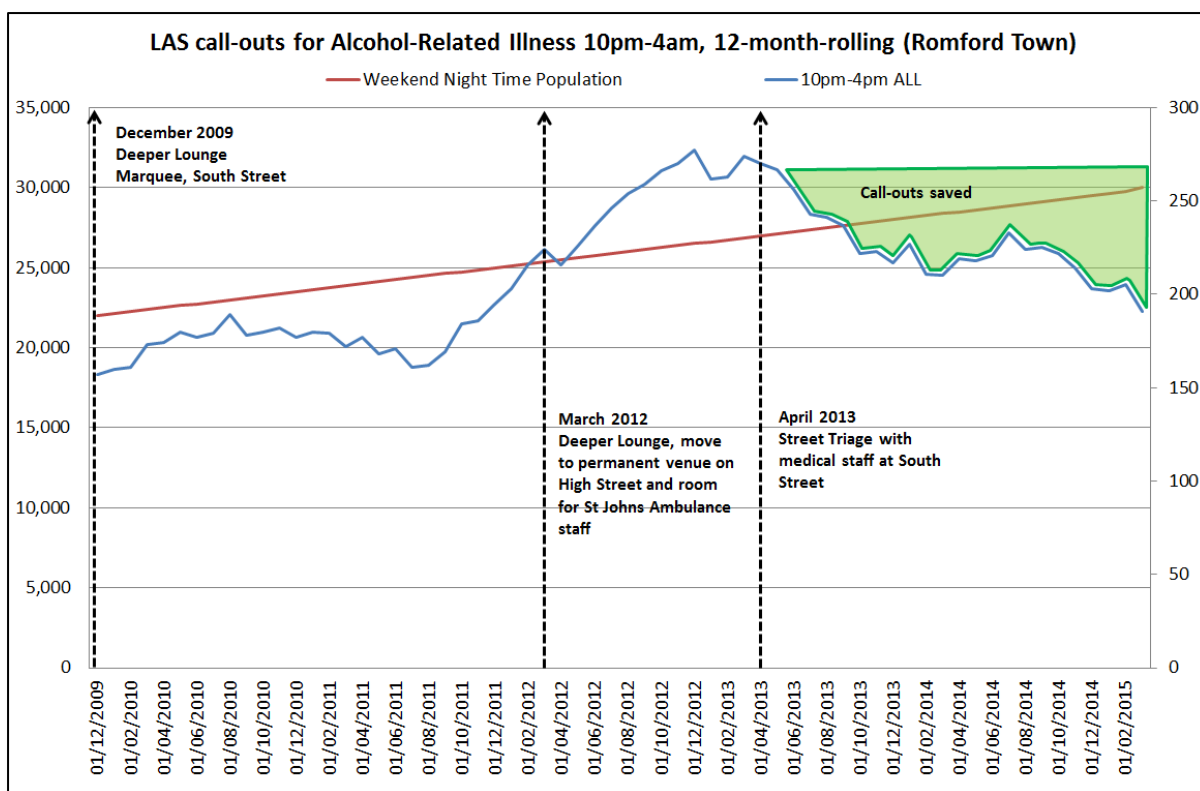


Table 1 London Ambulance Service, alcohol related call-out data for Romford 10pm-4am

Alcohol related ambulance call-outs	LAS alcohol call-outs current 12-months	LAS alcohol call-outs start rolling 12-months	Change % (volume)	Savings in £ for reduced call-outs
12-months to Mar-12 – Deeper Lounge gazebo	224	172	30.2 (52)	£15,600
12-months to Mar-13 – Deeper Lounge building on High Street	274	224	22.3 (50)	£15,000
12-months to Mar-14 - Deeper Lounge building on High Street and Street Triage in South Street	210	274	-23.4 (-64)	£19,200
12-months to Mar-15 - Deeper Lounge building on High Street and Street Triage in South Street	191	210	-9.0 (-19)	£5,700
Change since Street Triage began operating within main hotspot April 2013 versus March 2015	191	270	-29.0 (-79)	£23,700

Serious injury

In 2009/10 – one year, there were 20 serious injuries resulting from glass/weapon wounds attended by LAS, with an associated socio-economic cost of £514,940 (\$810k). There have been just 9 in the last three years, which equates to an annual socio-economic cost saving of £437,699 (\$688k), and total saving of £205,976 (\$324k).

Consumption

Assessing the impact of responsible drinks promotions and limiting advertising is difficult. When pre-loading is considered, then consumption may be unchanged overall.

Removing offenders and consequences

In the first 12-months 103 persons were removed from RT through barred from one barred from all, for periods of 3-weeks to 5-years, for incidents including threatening and abusive language, aggressive behaviour, confrontations with police/door supervisors, affray/public order and violence. This figure increased to 215 after 24-months. In the last year the number of active bans remains between 175-225.



Figure 14 Publicising successes using local media

Violence with CCTV evidence has increased from 43% in 2009 to 70% in 2014, whilst the proportion of those on CCTV detected increased from 38% to 55%. Whilst criminal justice outcomes are beyond our control, CCTV has helped contribute to a rise in the proportion of suspects identified (rising from 60% to 70%). Overall sanctioned detections for NTE violence increased from 36.7% to 44.8% (not including bans).

The number of victims who did not wish to proceed reduced dramatically from 33% to 3%, which may indicate more confidence in outcomes.

Police and LAS Assault

The nature and characteristics of NTE violence have remained similar in that most offences continue to occur within the street between Midnight-3am (although reduced to a focused temporal pattern rather than acute) with victims/offenders being predominantly male within the 18-29 age range.

Table 2 Table showing overall change in combined police and ambulance assaults within Romford Town's night time economy

Financial Year	Police and Ambulance Assaults in Romford Town 10pm-6am	Target	Actual
2009/10	529		
2010/11	468		
2011/12	303	Initial Target* -25%	-42.70%
2012/13	238		
2013/14	164		
2014/15***	220		-27.40%
2015/16		New Target** -20%	

* Safe and Sound Partnership Target

** MOPAC Target (Mayor's Office for Policing & Crime)

*** Change in classification and recording of violence, more 'simple battery' being converted to violence with injury assaults within Metropolitan Police data. See VWI in glossary for explanation.

Between 2009/10 - 2011/12 a reduction in assaults of -42.7% was achieved, against a target of -25%.

Between 2011/12 – 2014/15 violence has reduced a further 27.4% to date (with a target to reduce by 20% by March 2016, therefore exceeding target).

It's worth noting that initiatives which were implemented before the steepest declines in 2011/12 were the barred from one barred from all scheme and the first use of licensing conditions on clubs that customers must have identification scanned to enter. More than 100 people had been banned from RT by the end of 2010/11.

The reduction in violence offences between 2009/10 - 2014/15 equates to a socio-economic cost saving of £3,025,110. Since our new target began in 2012/13, the annual running costs of initiatives has been £40,000 per annum whilst the annual socio-economic cost saving has been £270k (\$424k), demonstrating that the work is value for money.

Table 3 Socio-Economic Cost changes in violence/assaults

Socio-economic costs		
Financial Year	Socio-Economic Cost of Violence	Annual savings compared against 2009/10
2009/10	£5,178,910	
2010/11	£4,581,720	£597,190
2011/12	£2,966,370	£2,212,540
2012/13	£2,330,020	£2,848,890
2013/14	£1,605,560	£3,573,350
2014/15	£2,153,800	£3,025,110

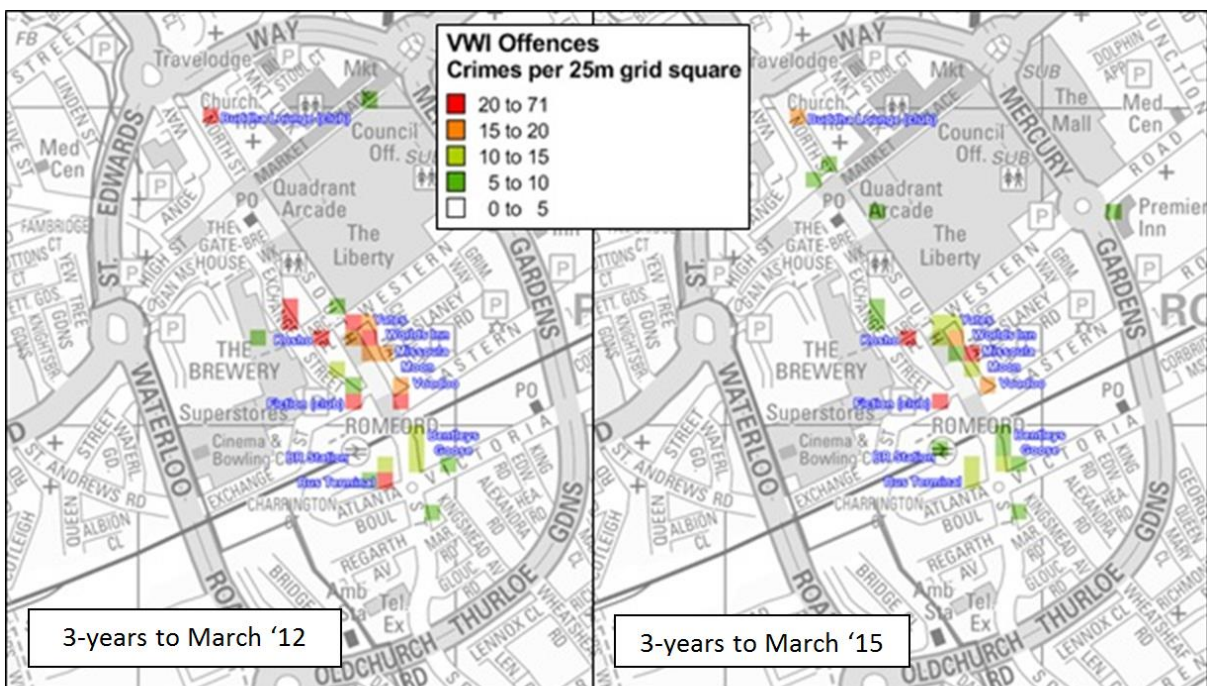


Figure 15 Map showing before and after hotspot concentrations of violence in Romford

Safe & Sound: Reducing violent crime in the night time economy

The total violence rate (including day time) in RT reduced from 5.19 per 100,000 visitors in 2009/10 to 3.55 per 100,000 visitors in 2013/14 (-1.65 and compared to an average of -0.45 for all London Metropolitan Centres). Ilford (increased rate from 3.08 to 3.09), which is the closet Metropolitan Centre to Romford was one of only two centres to see an increase regionally. This could indicate a marginal amount of geographical displacement from Romford. It may be useful in future to share details of bans with neighbouring boroughs to prevent any potential geographic displacement.

The chart shows the rate of LAS assault per 100,000 night-time visitors in Romford compared with the average for all London Metropolitan Centres between 2008/09 and 2014/15.

There was a -47% reduction regionally, however, in Romford the reduction was -61%, with a narrowing gap when compared against the regional average.

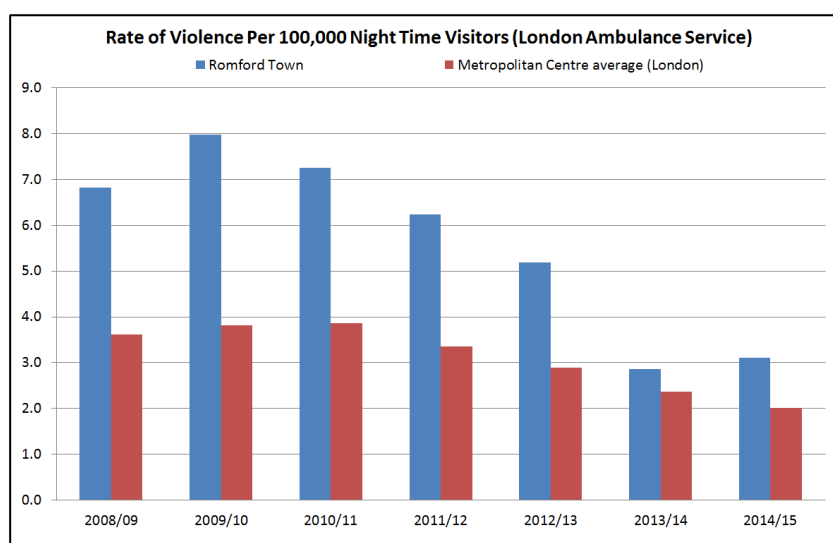


Figure 16 Rates of NTE violence per 100,000, Romford compared with average (LAS Data)

Diffusion of benefits and challenges

During the course of S&S overall crime taking place during the NTE has declined by 35%, including a 46% reduction in criminal damage and a 29% reduction in robbery.

The proportion of residents perceiving drunk or rowdy behaviour to be a problem has declined from 37% in July 2009 to 22% in March 2014.

Safe & Sound: Reducing violent crime in the night time economy

One new challenge has been a rise in mobile phones reported stolen in the NTE from female victim's shoulder bags. Previously, high levels of violence and poor behaviour may have deterred these types of offenders away from the NTE.

Conclusion

S&S continues to be monitored regularly with weekly briefings for frontline staff, banning meetings, 6-weekly strategic groups and bi-annual strategic profiles.

Change doesn't happen overnight, the long-term commitment from all stakeholders and strong partnership has been pivotal to the successes of S&S in Romford, taking good practice and implementing it in a tailored way that works.

Words: 993

Total Words: 3,972

Glossary

A&E Accident & Emergency an emergency department within a hospital

ABH Actual Bodily Harm also referred to as assault occasioning actual bodily harm, which is an offence category grouped under the umbrella of Violence with Injury (VWI)

Affray a public order offence consisting of fighting of one or more persons in a public place

ASB Anti-Social Behaviour any behaviour that causes or is likely to cause harassment, alarm or distress

ASBO Anti-Social Behaviour Order ASBO's are statutory measures that aim to protect the public from behaviour that causes or is likely to cause harassment, alarm or distress. These have recently been superseded by a range of new tools, including a CBO – Criminal Behaviour Order as of October 2014

Best Bar None a national initiative within the United Kingdom which aims to raise standards within licenced premises

Boroughs see local authority

CCTV Closed circuit television

ClubScan see ScanNet

CSP Community Safety Partnership collection of statutory bodies responsible for addressing crime, disorder and ASB in a local authority district (police; fire brigade; offender management – National Probation Service and Community Rehabilitation Company; public health; the local authority)

CST Community Safety Team a section of the local authority which has responsibility for crime, disorder and anti-social behaviour

CSEW Crime Survey for England and Wales a survey which measures the extent of crime by asking people whether they have experienced any crime in the previous 12-months

Safe & Sound: Reducing violent crime in the night time economy

CJS Criminal Justice System is the system of practices and institutions of governments directed at upholding social control, deterring and mitigating crime, or sanctioning those who violate laws with criminal penalties and rehabilitation efforts

Council see Local Authority

Deeper Lounge a safe haven providing a venue for people going out in the evening from 10pm-3am

Dispersal Zones a designated boundary covering a geographical space enabling officers with powers of dispersal, including dispersing groups of 2 or more people where there is persistent anti-social behaviour

Financial Year also referred to as a fiscal year or budget year

GLA Greater London Authority the body governing the 32 boroughs of London, see also local authority

GBH Grievous Bodily Harm a more serious assault or wounding, grievous bodily harm, which is an offence category grouped under the umbrella of Violence with Injury (VWI)

Home Office a government department which leads on a range of areas including drugs policy, crime policy and counter terrorism

LAS London Ambulance Service the emergency ambulance service which serves the Greater London Authority area

Local Authority or Local Government a geographical region within a city, county, metropolitan area or region within England. Also referred to as boroughs with London's Metropolitan Police divided in 32 Metropolitan boroughs

Marshalled Taxi Rank a safety initiative providing a secure staffed taxi rank, supplied by Transport for London's public carriage office

Safe & Sound: Reducing violent crime in the night time economy

MOPAC Mayor's Office for Policing and Crime a strategic oversight body for the Greater London region's police and community safety partnerships

Metropolitan Centre a large commercial area or business district of significance situated within London (Greater London)

MPS Metropolitan Police Service the police organisation responsible for the 32 boroughs of London, one of three police forces in Greater London, alongside the British Transport Police and City of London Police

NTE Night Time Economy

Planning and regeneration a department within the local authority which has control over areas such as town planning and urban and rural land use

Public health a department within the local authority which has control over addressing health related issues (i.e. alcoholism, dangerous drinking and substance misuse)

Public order (or disorder) see Affray

Radio-Link a radio system used by frontline staff within Havering to communicate incidents and alert members of staff when required for assistance

Safe & Sound network of local businesses in Havering

STT Safer Transport Team a policing team with special responsibility for transport hubs and modes of public transport

Sanctioned Detection offences which are detected and the perpetrator is sanctioned by being charged with an offence

ScanNet a scanning device used to record the identity of customers using a passport of driving licence before being allowed entry to a licenced venue within the night time economy

Safe & Sound: Reducing violent crime in the night time economy

SIA Security Industry Authority manages the licencing of the private security industry, as set out in the Private Security Industry Act 2001

Streetcare a department within the local authority which is responsible for services relating to street cleaning, rubbish, litter and graffiti removal, domestic and commercial noise complaints

Street Pastors volunteer and community organisation utilised for high visibility patrols and engagement of young people to signpost to diversionary activities

St Johns Ambulance a first aid charity within the United Kingdom

Trading Standards and licensing department a section of the local authority which enforces a wide range of legislation related to environmental health, health and safety, licensing and so on

Transport for London department responsible for public transport in London

Viper Car name given locally to a vehicle resource staffed with police, used for quick response to violent incidents in the night time economy with the aim of capturing evidence and supporting prosecutions

VWI Violence with Injury refers primarily to the offences of ABH (assault occasioning Actual Bodily Harm) and Grievous Bodily Harm with/or without intent (GBH), but also includes Attempted Murder. Violence with injury assaults are those whereby a more serious or visible injury has been sustained. Changes to recording and classification of assaults have been more thoroughly implemented within the Metropolitan Police force in 2014/15, which has led to a 'manufactured' rise in violence figures. For example, Common Assaults (which may be similar to 'Simple Battery' in the United States) whereby there is a visible marking or reddening of the skin, should be recorded as ABH

Bibliography

- Clarke, R. and Eck, J. (2003). Becoming a Problem Solving Crime Analyst in 55 small steps, JDI University College London. <http://www.popcenter.org/library/reading/pdfs/55stepsUK.pdf> Accessed 15.05.2015
- Donkin, S. and Birks, D.J. (2007). Victims and Offenders of Night-Time Economy Violence, JDI University College London.
- Edmunds, Alan (undated) Violent Crime – High Street: Breakdown of Issues and Responses
- Greater London Authority (2002). Late-Night London: Planning and Managing the Late-Night Economy, GLA London.
- Home Office (2010). Selling alcohol responsibly: The New Mandatory Licensing Conditions, Home Office, London.
- London Borough of Havering – Aurora Mapping, which show licences for premises <http://maps.havering.gov.uk/> Accessed 15.05.2015
- Office for National Statistics (2014). Overview of Violent Crime and Sexual Offences 2012/13, ONS and UK Statistics Authority.
- Revised Home Office cost of crime estimates https://www.gov.uk/government/uploads/system/uploads/attachment_data/file/118042/IOM-phase2-costs-multipliers.pdf Accessed 15.05.2015
- Richardson, A; Budd, T; Engineer, R; Phillips, A; Thompson, J. and Nicholls, J. (2003). Drinking, crime and Disorder: Home Office Research Paper 185. http://www.popcenter.org/problems/assaultsinbars/PDFs/Richardson_etal_2003.pdf Accessed 15.05.2015
- Roberts, M. (2004). Good Practice in Managing the Evening and Late Night Economy from an Environmental Perspective, Office of the Deputy Prime Minister.
- Shepherd, J. (2007). Effective NHS Contributions to Violence Prevention: The Cardiff Model, Cardiff University.

Appendices

Appendix A – Location of Havering / Romford

Location of London Borough of Havering, Romford, and other Metropolitan Centre's within Greater London Region.

London Borough of Havering

- Situated within the East Policing area
- 238,000 permanent residents
- One of Greater London's key centre's (Romford Town)
- Plays a strategic role in London's night time economy (NTE)
- Romford Urban Strategy
- 2,000,000+ 18-24 NTE users annually
 - 41 restaurants
 - 21 bars/pubs
 - 4 nightclubs



Appendix B – Media resources

[Barred from One, Barred from All scheme poster](#)

Please see below for articles relating to the project, and background reading relating to alcohol related violence within Romford.

[Local News Article – Alcohol sales blamed as Romford revealed as London’s most violent area outside Westminster](#)

[Local News Article – Blanket ban in store for Romford lager louts](#)

[Local News Article – Dreadful dozen banned from Romford town centre](#)

[Local News Article – Group set up to reduce Romford violence wins recognition](#)

[Local News Article – More than 100 people banned from Romford town centre](#)

[Local News Article – Havering’s Street Pastors: Providing a soft landing for those who party too hard](#)

[Regional News Article – Underage drinkers using fake IDs banned till age 19](#)

[Regional News Article – On board the booze bus](#)

Appendix C – Licensing details for licensed premises in Romford

- [Bitter End](#)
- [Brickyard](#)
- [Bull](#)
- [Circuit](#)
- [Durham Arms](#)
- [Fiction](#)
- [Golden Lion](#)
- [Havering Oak](#)
- [Kosho](#)
- [Liberty Bell](#)
- [Mawney Arms](#)
- [Missoula](#)
- [Moon & Stars](#)
- [Mulligans](#)
- [Prince Albert](#)
- [Sun](#)
- [Victoria](#)
- [Voodoo](#)
- [Wheatsheaf](#)
- [Worlds Inn](#)
- [Yates Wine Lodge](#)