



Project

ACHILLES

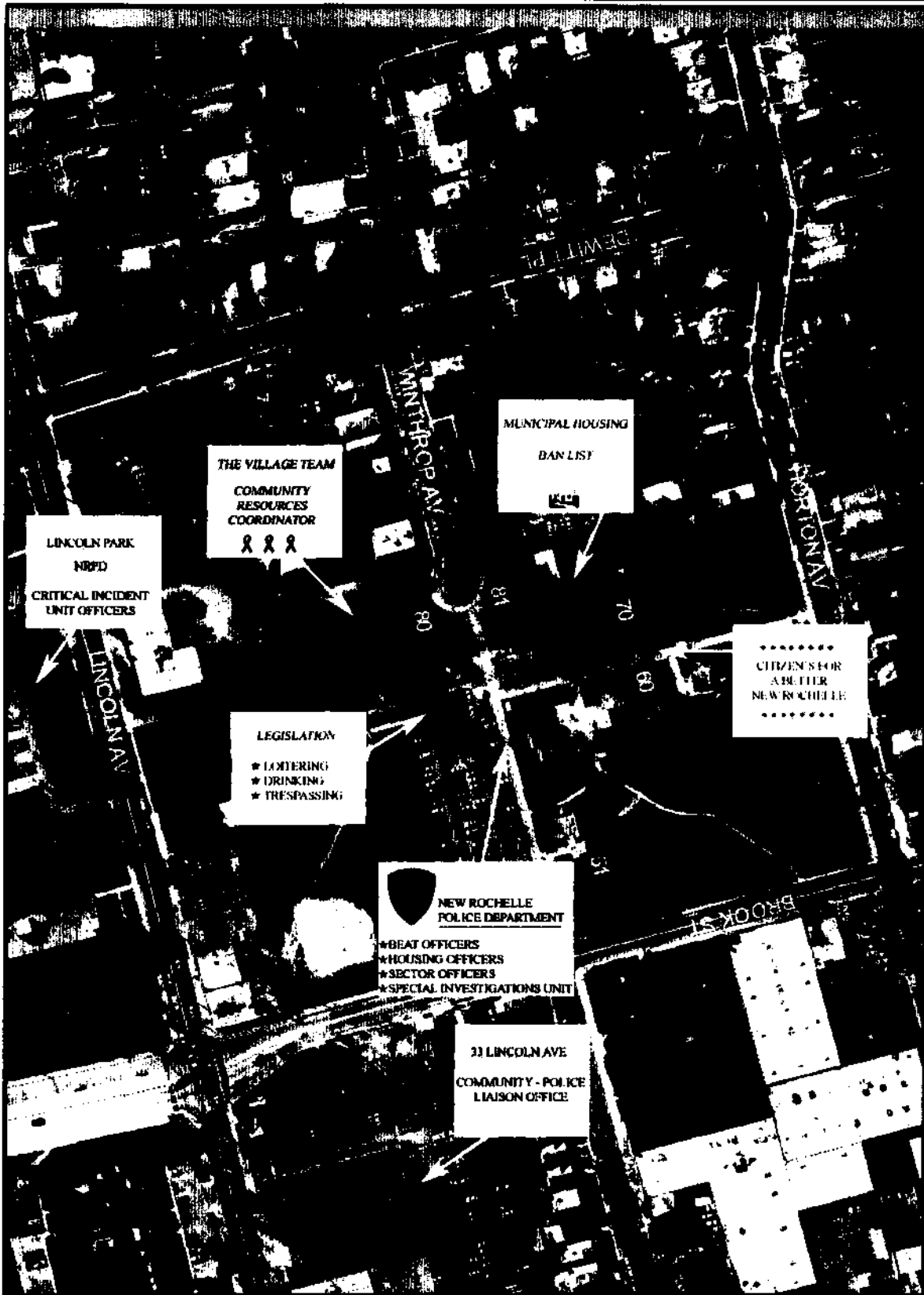
***(Attacking Crime in Hartley and Improving Life with
Law Enforcement and Support)***

Project ACHILLES
(**A**ttacking Crime in **H**artley and /mproving **L**ife
with **L**aw **E**nforcement and **S**upport)

Summary

The Robert Hartley Housing Complex is located in the heart of the city of New Rochelle, the seventh largest city in New York with a population of 72,500. The Hartley Complex comprises a six-block area, with five low-income housing buildings with approximately 250 families. In addition, the area has numerous multi-family dwellings, several businesses and six houses of worship. The Hartley area had experienced for over ten years a high incidence of violence, a high incidence of drug use, and poor quality of life for the residents as well as a poor citizen-police relationship, rife with suspicion and distrust. Project *ACHILLES* was initiated in the early part of 1999. The endeavor encompasses the two core, equally important components of community policing: community partnership and problem solving. The acronym *ACHILLES* stands for **A**ttacking Crime in **H**artley and /mproving **L**ife with **Z**aw **E**nforcement and /mproving **Z**ife with **L**aw Enforcement and **S**upport. The Hartley area represented the Achilles heel or weak spot of the city. The goal of the Project *ACHILLES* was to reduce incidence of violence, reduce drug use, improve quality of life and improve the police-citizen relationship. The results have been remarkable. From 1999-2002, a 34% reduction in serious crime, a 27% increase in arrests, a 35% increase in city code summonses dealing with quality of life issues and a 14% increase in closed Detective cases due to increased community cooperation. The improved rapport with the community has also been evidenced by a reduction in civilian complaints, specifically a 65% reduction from 1999-2002. The following project document details the manner in which the **SARA** model of problem solving was utilized, the three phases of the response plan and the numerous community agencies that provided support. The aerial photograph on the following page depicts the Hartley area and the support programs.

Hartley Houses Overview



Training - The New Rochelle Police Department is committed to community policing. The Department's core philosophy- Police And Community Together or **PACT** was implemented in May 1994. The city is divided into eleven beats, and twelve beat officers are the primary community-policing practitioners in their area. The beats were designed to encompass neighborhood associations, houses of worship, businesses and schools. The beat officers provide proactive services tailored to the community's needs. Directed response, rather than random patrol, is the primary method of providing services to the New Rochelle community. The Department is a total problem-oriented policing Department. Every member of the Department is a community-policing practitioner. Problem-oriented policing, with the key tactic of problem solving, is the main strategy that the Department uses for successful community policing. The Department has been successful in changing the quality of contact with the community. This required a move from the traditional method of ~~policing-~~ patrolling in cars for the purpose of responding to calls for service. During a call for service, officers usually meet people under duress, which can cause these contacts to be negative. By placing officers in beats and moving the officers out of patrol vehicles and becoming less reactive has increased the positive contacts between officers and the community. The Department determined that a key component in creating positive contacts was also effective communication between the officers and the community. All Department members received personal communications training designed to make them a "contact professional". Every contact is viewed as an opportunity to gain public support and further the Department's goals. All employees have been trained to be assertive, not aggressive. All Department members have been trained in the problem-solving method of SARA, which has enabled them to produce marked reductions in neighborhood violence, domestic violence, drug trafficking and drug use, auto theft, and repeat offender incarceration.

Community outreach is an important aspect of community policing, not subject to change or discontinuance. All Department members have attended PTA, City Council, Neighborhood Association and Business Association meetings to seek input from the community on what they expect from their police department. As a result of these meetings, the Department regularly engages in community organizing, civilian training and neighborhood surveying. The Department also operates a mobile precinct, which is a 35-foot long special-use vehicle. The vehicle facilitates the Department's outreach efforts. Programs such as Domestic violence intervention/counseling, security surveying, neighborhood surveying and civilian framing are conducted throughout the city.

The community owns the Department. Like shareholders in a private corporation they participate in the decisions that impact on the direction the Department moves and the delivery of services to the community. The Department's long-term community policing plan complements New York State's Byrne Program Strategy by using community policing to reduce violent crime, drug trafficking, and drug use. Community involvement, framing and inter-agency collaboration both enhance and complement the Byrne strategy.

Prologue

In preparation of launching the first phase of the response plan, local clergy and community leaders in partnership with the New Rochelle Police Department created a group named the "**Citizens for a Better New Rochelle**". Upon its formation, the following mission statement was adopted: "The Police and the Community working together to provide a mutually respectful relationship through open lines of communication and cooperation." This group consists of members of the Police Department, clergy, NAACP, New Rochelle Municipal Housing Authority, Youth Bureau, City Council, United Tenants Council, Community Action Program, neighborhood associations and civic groups. The "**Citizens for a Better New Rochelle**" was established to serve as a conduit between the Police Department and the community during all phases of the response plan.

Scanning and Analysis

Crime analysis was utilized by the Department in conjunction with the "Citizens for a Better New Rochelle" to identify the area of the city with the most recurring problems of concern to the Police and to the community. By utilizing the Department's records management system, the Hartley area was singled out with the highest incidence of serious crime. The majority of the serious crime, i.e. robberies, assaults, drug-involved shootings, was committed by male/blacks aged 17-29. These crimes generally occurred during evening hours, 7:00 p.m. - 4:00 a.m. Neighborhood surveys were conducted, and it was determined that the residents believed the quality of life was generally poor, and the long-standing distrust between the Police and this community continued to exist. Police were viewed as distant and insensitive to the needs of the community. The above listed problems had existed for the past 10-12 years, causing many harmful effects to the community and to the Department. The area had become a known drug-activity location, attracting dealers and buyers. This illegal activity made the area unsafe, and cast a stigma on those law-abiding residents of the community. It was also unsafe for children to congregate in the playgrounds, as well as Lincoln Park. Property value decreased as the area became less desirable. The problems also caused a drain on Department resources, with a high number of calls for service, with most calls to the Hartley area requiring more than one police unit. The distrust between the community and the Police resulted in a poor rapport between the two, with very little or no cooperation provided by the community during Police investigations.

Phase 1 - Stabilization

Response - The Department determined that the first stage in the response plan in dealing with the Hartley area crime and disorder was to stabilize the incidence of criminal activity in the area and provide a much greater police presence. This was accomplished by the following methods. The Department's Special Investigations Unit, utilizing undercover agents, launched numerous operations prior to 1999 to address the drug activity in the area, and these efforts culminated with over 200 arrests in the Hartley Area for drug related offenses. These arrests had an immediate, positive impact on the Hartley area, with numerous drug dealers now incarcerated and the residents feeling an improved sense of security.

The Department has also utilized additional units to patrol the Robert Hartley Housing Complex. Working with the New Rochelle Municipal Housing Authority, **two Housing Officers were acquired through COPS funding** and were assigned to the Hartley Complex. These officers have gained the community's trust by becoming personally involved with the lives of the residents, as well as dealing with serious crime involving drugs and firearms. The president of the United Tenants Council, and the Executive Director of the New Rochelle Municipal Housing Authority, have both commended the officers on numerous occasions. The New Rochelle Mayor has called the community policing efforts by these two officers a complete success. These officers and their activity were the subject of a feature article in the New York Times on January 13th, 2002. It should be noted that the Police Commissioner purposely assigned these two white police officers to this area that is comprised predominantly of black residents. His intent was to demonstrate to the community and the police department that a white officer could succeed in gaining trust of the residents by properly communicating with them, caring about them and dealing effectively with their concerns and crime in the area.

Loitering- The New Rochelle Police Department has addressed several **quality-of-life** issues after determining that these violations often contributed to some of the fear amongst residents in the Robert Hartley Housing Complex area. Several of the conditions perceived by many of the area's residents were continuing problems of loitering, drinking in public and noise **issues**. Specifically, groups loitering on a particular corner, blocking pedestrians from entering a store, acting disorderly and creating additional calls for service to the police. The **Neighborhood Watch Patrol**, which received training from the New Rochelle Police Department, began engaging in conversation with these groups and conveyed to them the community's displeasure with their conduct. In a short time, the loitering groups were dispersed.

Legislation - Another concern was **trespassing** in the Robert Hartley Housing buildings. Due to limitations placed on the police because of ambiguous/poor signage in these buildings, as well as the absence of the definition of "public place" in the New Rochelle city code, police were often powerless to enforce trespassing statutes in these buildings. As a result of efforts from the "**Citizens for a Better New Rochelle**" a comprehensive definition of "public place", which now includes public housing property, was incorporated into the city code. The detailed definition of "public property" was the missing element in effective enforcement by the police with an ongoing problem, and it also demonstrated a creative and innovative approach that promotes quality and excellence in law enforcement. City code enforcement, dealing with quality of life issues, was also possible now. In addition, a banned list was created to identify those individuals that regularly disrupted the peace of the community through criminal behavior, loitering, drinking in public, etc. These individuals were served an official notice advising them that they were no longer legally entitled to enter or remain on municipal housing authority property. This process now allowed the police to make an instant arrest of a banned individual who had created a nuisance and negatively affected the quality of life in the community. The Housing Officers mentioned earlier made many of these arrests.

Their efforts have resulted in a **34% reduction in serious crime from 1999-2002 in the Robert Hartley Housing Complex, a 27% increase in arrests and a 35% increase in city code summonses.** Additionally, a federal three-strike law was implemented in the Hartley complex to allow eviction of chronic offenders.

Other components of Phase 1 included assignment of Critical Incident Unit Officers to Lincoln Park during hours of peak activity including the summer basketball league. Lincoln Park attracts large numbers of people during the basketball games, with incidences of drinking in public and disorderly conduct a concern. The patrol of uniformed members of the Department contributed to a much-improved Park that all residents can enjoy. Additionally, the Sector Officer and the Beat Officer were directed to provide patrols of the area. All of these officers have been effective, through uniformed patrol as well as undercover work, in effecting arrests and improving the quality of life in the area.

The **Mobile Precinct**, a 35-foot long special use vehicle, was also deployed to the Hartley area. The vehicle has facilitated the Department's outreach efforts, and served as a base of operation for the Housing Officers.

Phase 2 - Law Enforcement with Community Support

With the Hartley area stabilized, Phase 2 of the response plan was implemented. This phase consisted of the New Rochelle Police Department, working with numerous community organizations to establish a solid presence and support system for the residents.

The Community/Police Liaison Office was established at 33 Lincoln Avenue, with a three-fold purpose: to improve mutual respect between the police and the community, to enhance the lines of communication between the police and the community and to gain a greater degree of trust between the police and the community. Community organizations and private corporations donated all office space, telephone, carpeting and furniture. The Liaison office, which is staffed by both police officers as well as residents, has brought New

Rochelle Police to the community. The assistance with the staffing of the office by residents has enabled the department to strengthen police relations, effectively use resources and promote community participation. Citizens appear at the Liaison office to report crimes, request information on issues such as domestic violence, quality-of-life enforcement, and the civilian complaint process. Residents also utilize the office as a meeting place. As an example, the New Rochelle Police Department's Training Unit provides training to residents forming a **Neighborhood Watch Patrol**. Since the community has more access to the police officers on a person-to-person basis, many barriers and tensions mentioned earlier have been broken down. Increased intelligence because of the greater trust has resulted in making the target area safer and reducing the negative effects of the rumor mill. Gang-related issues have been dealt with by inviting the parents who have children shot, killed or sentenced to prison, to the Liaison office to provide counseling and prevent future acts of violence by engaging in a proactive process of early intervention.

Department's Community Resources Coordinator

The Department's Community Resources Coordinator has served as the key component in this endeavor, bringing together the numerous entities to work cohesively. **The Village Team** has been utilized to address several areas of concern. This team consists of over 40 entities, and is used to examine existing physical, emotional and intellectual development, and identify unmet needs. The intent is to provide the developmental experiences that promote thriving and resiliency i.e. family support, positive family communication, a caring neighborhood, a caring school climate, parent involvement in schooling; a perception that adults in the community value youth; parents and other adults modeling positive, responsible behavior; positive peer influence; high expectations by parents and teachers of young people and the opportunity to engage in creative activities. **The Village Team** has a long-term perspective, understanding that efforts must be comprehensive, collaborative and enduring. All organizations with a role in the community need to participate because each brings particular strengths and capacities to a culturally diverse community asset

building effort. The team places a high value on both process and outcome evaluation.

Several other events have been held to deal with the aforementioned problems in the Robert Hartley Housing Complex area. These events were held to strengthen police-community relations and obtain input on perceived problems relative to quality-of-life issues, crime, community-police relations, civilian complaint process or any other concerns voiced by the community that needed to be addressed. In May of 1999, an open house was held for the mobile precinct in the Robert Hartley Housing Complex. Information was provided on employment opportunities, community programs, youth violence, the RESPECT club and other information on city agencies. The RESPECT club is a forum for youths aged 7-16 to address a number of issues such as drug use and family issues, and is coordinated by a New Rochelle Police Officer. In February 2000, a "Meet the **Citizens for a Better New Rochelle**" night was held to engage in meaningful dialogue with community members. The **Neighborhood Watch Patrol** was formed and implemented after being trained, and their presence has resulted in reduced loitering, and a greater sense of safety amongst the residents. Calls for service in the Robert Hartley Housing Complex area have decreased, especially during the hours of their patrols. A **Citizen Police Academy** was held for residents of this area with five specified objectives: Encourage an increased communication and interaction between the New Rochelle police officers and they community which they serve; Dispel misconceptions about the roles, responsibilities and activities of the New Rochelle police officers; Provide participants with a basic understanding of police powers and limitations imposed by law and department policy; Familiarize participants with the dangers, difficulties and ambiguities inherent in modern police work and Foster a citizen-police partnership to combat crime and develop a safer community. Additionally, the New Rochelle Board of Education, the Youth Bureau and the Youth Court have all contributed towards the improvements in the Robert Hartley Housing Complex area.

The preceding information has demonstrated, by specific examples that **ProjectACHILLES** has been, and will continue

to be, successful in achieving a safer community as well as a solid relationship between the community and the police department. Crime has been reduced in this area, calls for police service are decreased, residents feel safer and there is more cooperation between the residents and the police.

Additional achievements will be realized because this partnership is viable, based in trust and understanding, and limited only by its imagination. For over four years, this partnership has grown, matured and persevered in an arena where many such partnerships lose their purpose, lose their strength and eventually cease to exist. We confidently anticipate that Project *ACHILLES* will, for years to come, improve the quality-of-life for New Rochelle business owners and residents.

Phase 3 - Continuance of Police-Community Partnership

The New Rochelle Police Department and the numerous community agencies involved in the response plan continue their relationship with numerous events. A Police-Clergy breakfast is held at least once a year as a forum to exchange ideas. A mentoring program has been established through the Boys and Girls Club and Police Foundation, with the ultimate goal being the establishment of a Police Athletic League. The "**Citizens for A Better New Rochelle**" continues to meet on a regular basis, and has served as a conduit between the Police Department and community on a number of occasions. Another **Citizen Police Academy** has been planned, and **The Village Team** continues to provide necessary support.

Assessment - Project *ACHILLES* has been evaluated utilizing several different methods. The New Rochelle Police Department's records management system has been used for comparison statistics on crimes, calls for service, arrest, and city code violations. Serious crimes (Part 1 crimes) have decreased 34% from 1999-2002 in the Robert Hartley Housing Complex area. Calls for service to the police have decreased 19% from 1999-2002. Arrests have increased by 27% from 1999-2002, and city code summonses have increased 35% from 1999-2002. **Additionally, according to the United States Department of Justice "Crime in the United States", New**

Rochelle was the fifth safest city its size nationwide (70,000-80,000 in population) during the year 2000, and third safest city nationwide during the year 2001. Intangible items such as trust and a perception of safety have been measured through neighborhood surveys, at community meetings and during informal contacts between the police and the community. All of these continue to demonstrate that the police have gained the trust of the residents in the Robert Hartley Housing Complex area, and the residents feel safer. The Criminal Investigations Division has experienced a 14% increase in closing cases in the Robert Hartley Housing Complex area from 1999-2002, mostly due to information provided because of greater cooperation between the police and the community, with the community and police "accepting" one another. It is anticipated that all of these measures, statistical and otherwise, will continue to demonstrate that the police-community partnership remains strong and committed to improving the quality-of-life and reducing crime. **Civilian complaints, which include force complaints, abuse of authority, discourtesy and ethnic slurs, have decreased 65% from 1999-2002.**

The New Rochelle Police Department has learned several valuable lessons from Project *ACHILLES*. Training for all department members is imperative for any problem-oriented policing initiative to succeed. The members must have knowledge and skills to approach problems in a non-traditional manner, and to gain the trust and support of the community. Every department member must be a community-policing practitioner. A solid, honest partnership must be established between the police and the community. The "**Citizens for a Better New Rochelle**" exemplifies this in Project *ACHILLES*. In addition to the regular meetings of the group, numerous subcommittees have been formed to deal effectively with specific problems or concerns. The group also remains ready to meet on short notice should an emergency situation arise where community unrest is likely. A total community outreach effort must be implemented, utilizing the PTA, City Council, neighborhood associations, media, civic groups, business associations and other city agencies for support services and resources.

The **SARA model of problem solving** should be utilized to address the most recurring problems. Scanning, Analysis,

Response and Assessment are all crucial steps in dealing with these problems. The problem must **first** be clearly identified and stated, which will allow the remaining three stages to work efficiently. The analysis is crucial because the response plan will be guided accordingly. The response should be multi-faceted, bringing together as many resources as possible. Each entity will have its own strengths and capabilities, and the sum of all entities will provide for any efficient and capable response. The final stage, Assessment, is vital in that a determination must be made as to the effectiveness of the implemented strategies. Evaluation of the strategies must be ongoing to remain credible.

Other agencies can adopt all of the strategies and practices employed during this project. The methods are generic enough that they should be universally acceptable, and effective in any police department or community. In concluding, the acronym to remember for any community-policing journey such as Project *ACHILLES* is **TRIP**. The police and the community are embarking together on a **TRIP**. *T* is for training of all department members in problem-solving tactics and skills, as well as personal communications; *R* is for the relationship between the police and the community, a relationship that is absolutely necessary; *i* is for the intelligence gathered to identify the recurring problems; and *P* is for problem-solving by the police and the community which includes the response measures that are implemented.

Conclusion

Project *ACHILLES* was initiated in the early part of 1999, and the preceding project document has demonstrated, by specific examples, that the project has been successful in achieving its objectives. Always a central component of the project has been the "Citizens for a Better New Rochelle's" mission statement: "The police and the community working together to provide a mutually respectful relationship through open lines of communication and cooperation". A municipality in which there exists a sound relationship between the police and the community is invariably a safer community, has better crime prevention methods, has residents who provide input into the police department's policies and has police officers who genuinely are concerned with the people who live or work on their beat, sector or zone. Police officers, who care about the people they serve have, in turn, people who care about them. Project *ACHILLES* exemplifies this partnership in our city. Much has been accomplished in a relatively short amount of time. Additional achievements will be realized because this partnership is viable, based in trust and understanding, and limited only by its imagination. We proudly list the following as some of our accomplishments: Sustained reduction in crime, increased arrests, increased city code summonses, greater cooperation between the police and the community, greater sense of safety amongst the residents, establishment of the Police/Liaison office, an honest exchange of information between the community and the police, rumors dispelled to prevent possible crises, increased communication and good will between community leaders and the police and gaining the trust of residents.

We confidently anticipate that Project *ACHILLES* will, for years to come, be a vital part in the continued improvement in quality-of-life for this areas residents and business owners.

Supplemental Information

On Patrol

Three Years Ago, Two Police Officers Went Into New Rochelle's Projects. They Took Their Beat Personally.

By COREY KILGANNON

NEW ROCHELLE

It could easily be a television series, this story that has unfolded over the last three years in New Rochelle's gritty housing projects.

Here, the police have long been considered unwelcome outsiders. When they came, responding to a call, they came in groups, armed like a SWAT team.

Enter Patrick J. Carroll, an imposing man with a plain-spoken demeanor and a no-nonsense way of running a police department. Commissioner Carroll, a former New York City police officer, was appointed to the job in 1990 as part of an ambitious plan that

police problem. He sets up the same type of community policing programs in New Rochelle that he instituted in several of New York's toughest neighborhoods in the early 1990's.

It was not enough, the commissioner contended, to have officers patrolling tough neighborhoods from the comfort of a police cruiser. He wanted some officers on the ground and meeting the public in person on sidewalks and community relations. When it came to assigning officers to these predominantly black projects, city officials cautioned Commissioner Carroll to be conscious of the race of the officers. And he was.

"They started to assign a minority officer, but I said,

the people there and send a message to them as well as the 180 cops in this department that you don't have to have a black or Spanish cop in there to make it work."

The commissioner offers all new recruits the chance to take the three-year assignment to patrol the projects. It would speed them toward earning their gold shield, the rank of detective. It is not an enviable detail, especially for a recruit. But officers, even veterans, ventured into the projects alone, and to be assigned to patrol anywhere near there is considered punishment. Only two men, both rookies, volunteer for the duty.

The commissioner assigns Claudio Carpano and Joe Barardi to patrol the projects. The residents are wary,

dangerous years. But slowly, they begin to win the community's trust and friendship by helping paint building loobies and buying Christmas presents for the children. They also win respect by tackling gun-wielding gang members and making serious drug arrests. Slowly, they usher in a reduction in crime and become embraced by the community. Even many of their fellow officers are amazed.

This series of events of daily dramas large and small has often played out on streets like those in the Park Avenue houses of the late 19th century. The houses comprise a mix of styles and architectural details and are a mix of styles and architectural details.

The houses are a mix of styles and architectural details. The houses are a mix of styles and architectural details. The houses are a mix of styles and architectural details.

They would never be taken from the mothers. Being taken away and they would be taken away and they would be taken away and they would be taken away.

They would never be taken from the mothers. Being taken away and they would be taken away and they would be taken away and they would be taken away.

They would never be taken from the mothers. Being taken away and they would be taken away and they would be taken away and they would be taken away.

They would never be taken from the mothers. Being taken away and they would be taken away and they would be taken away and they would be taken away.

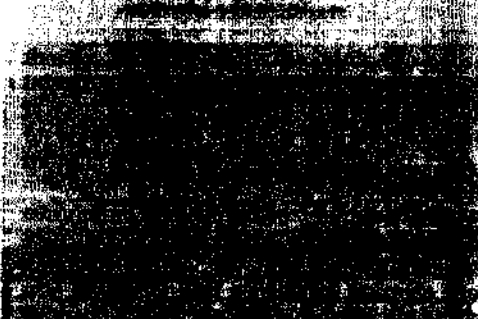
They would never be taken from the mothers. Being taken away and they would be taken away and they would be taken away and they would be taken away.

They would never be taken from the mothers. Being taken away and they would be taken away and they would be taken away and they would be taken away.

They would never be taken from the mothers. Being taken away and they would be taken away and they would be taken away and they would be taken away.

Steven D. Horton, executive director of the New Rochelle Municipal Housing Au-

Officers buy Christmas gifts, but wear bulletproof vests



The officers are seen in a group, some wearing bulletproof vests. The image is very dark and grainy, making it difficult to discern specific details.

The officers are seen in a group, some wearing bulletproof vests. The image is very dark and grainy, making it difficult to discern specific details.

Community crime has become more of a priority in New Rochelle in recent years.

The projects are in the lowest-income, highest-crime area of the city. Within several blocks of them is Iona College and two fairly new additions, the Avalon, an upscale residential tower, and New Roc City, the huge sports and entertainment complex the city hopes will spark a local revitalization.

The police beat known as Sector 6, which includes the Hartley Houses, has led the city the last 13 years in drug-related crime, assaults and shootings. Crime soared in the projects in the early 90's during the crack epidemic. There were riots here after the Rodney King beating. One block bordering the Hartley houses is Horton Avenue, a hangout for the street gang, the L.A. Boys (L.A., as in Lincoln Avenue).

Both officers wear bulletproof vests at all times, even in the summer.

"I wouldn't do what they do, even if it was going to get me a gold shield," said Joseph Pogglioli, president of the New Rochelle Patrolmen's Benevolent Association.

Both officers volunteered for the assignment for a challenge. Officer Berardi wanted a chance to do hard-nosed police work and earn his gold detective's shield as quickly as possible. He is sharp-eyed, even twitchy, and knows when to stop trying to be a pal. Here, a casting director would be thinking: young, tough and handsome.

Officer Carpano is older than his partner and has been around the block. He seems to take true delight in this element, in interacting with everyone from children looking for a hug, to aspiring thugs pacing the street corner.

The two officers work together when a situation calls for more than one man, but mostly they patrol their respective projects solo. They set their own agendas, making their own hours and patrolling where and how, in their judgment, they are most needed.

Perhaps even more than New Rochelle officials, the tenants themselves want crime in the projects controlled.

Janet Rice, 38, has lived her entire life in these projects. She is raising four young children here and trying to protect them from the perils of the street. Since Officer Carpano has begun patrolling, there are far fewer drug dealers in the playground outside the houses.

"The people here had an attitude that wasn't good to cops," she said, as she walked across the projects pushing a shopping cart. "Now there is a lot less crime and the children have learned to respect each other," said Mrs. Rice, whose oldest son is 14 and plays for the New Rochelle football team. She said he and other youths got helpful guidance from Officer Carpano.

Officer Carpano is like a big brother to many of the children here. He lives in New Rochelle with his wife and two children. He said they complain about the time he devotes, even days off, to his "second family."

He organizes summer barbecues and holiday parties every year, and raises thousands of dollars at Christmastime to buy presents for the children.

Both officers helped build a girls' locker room at the Remington Boys Club. If an

Officer Carpano is an eligible bachelor who speaks Italian, Spanish, French, and English. He grew up in a tough neighborhood here, he began living on his own at 15 after his mother died. He joined the Army at 17 and served in the 101st Airborne Unit and in Nicaragua, Haiti and Panama.

Both officers have had to make difficult arrests without backup. Both have been

...has been pushed in the crowd.

...get off work in the afternoon and get to the projects in the evening.

"The first sign of trouble in the projects," said Officer Carpano, who recalled being confronted by teenagers who tried to embarrass him in front of other officers.

...to do this.

...kids ... his ... to ... their ... over ...

...to ... children ... will ... abouts

...makers or ... Officer Carpano.

...the ... for example, ... they've made a scene, ...

"You've got to know when you say you know what's up," Officer Carpano said. "If it's not too tight, I may let him slide because I know I'll see him the next day and I'll talk to him then."

"We used to chase people through the projects," Officer Berardi said. "It's not really necessary anymore. We know their names, where they live, who their parents

and friends are. We call them, or knock on their door. It's arrest by appointment now.

"We don't like to handcuff anyone in front of their family," he said. "We let them know we're here and walk out together and cuff them in the car."

Officer Carpano added: "You know their family, that's all you need. A loaded Glock doesn't scare them, but their grandmother's cooking spoon does."

In October, there was a suspicious fire in the Hartley houses, and the two officers pursued leads and found four men who were eventually arrested for arson. In December 2000, Officer Carpano ran into a burning building and felt his way through a smoky hallway and apartment to rescue an elderly woman and her infant granddaughter.

The Bracey houses have 100 units and are family-oriented. The Hartley projects are bigger and there is more crime.

Officer Berardi is less gregarious than his partner. Everyone knows him by first name at the Hartley Houses. Some say hello and some do not. He grew up in Yonkers, a product of Catholic schools with friends of all colors. His father is a successful mortgage broker in White Plains, and both his brothers make nice livings working for him. One just bought a large house in a ritzy area of northern New Rochelle. Officer Berardi lives in a meager apartment in Yonkers. Non-veteran cops here make well under \$50,000.

Mr. Mosley, the tenants' representative said that Officer Berardi looked a bit out of place when he first came in: "He looked like a high school kid lost in his uniform, but he's kind of grown into that uniform."

He makes more than 50 arrests a year, many of them for serious felonies. He is eager to make detective. He was decorated twice for bravery last year, one for being in the line of gunfire on New Year's Eve, and another for chasing down a fleeing suspect who pulled out a gun. Officer Berardi forced the suspect to surrender by tackling him and putting his gun to the man's head.

Residents tease Officer Berardi by calling him Track Star. He was an all-state sprinter in high school and he claims to be the fastest guy in the projects. He welcomes challenges from teenagers to race him, in full uniform, from one telephone pole to the next.

"I've never lost," he said. But he says he still has to watch his back here. He feels uncomfortable standing still too long, and always walks in an S-pattern. Still, he has clearly made a difference.

New Rochelle Mayor Timothy Itoni called the community policing experiment in the projects "a complete success."

"People used to complain that 'The only time we see the police is when they're chasing our people back into the projects to make an arrest,'" he said.

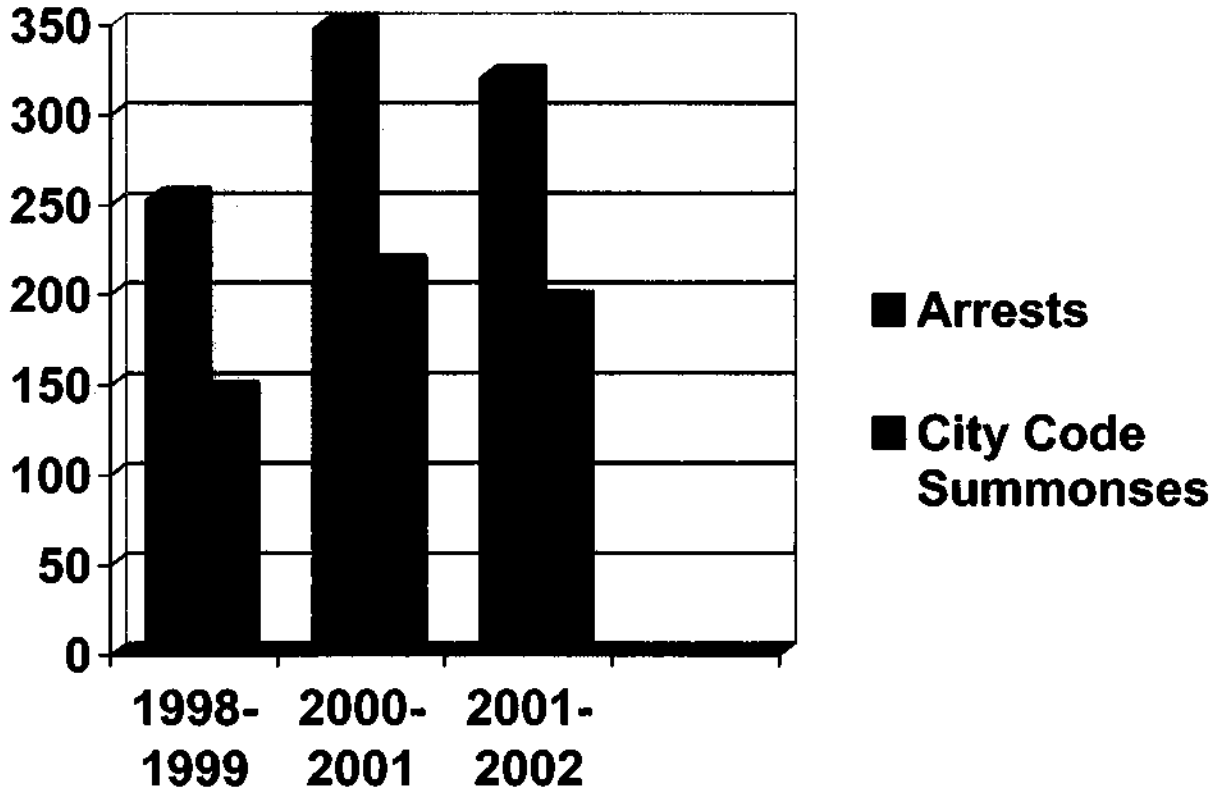
"Now I haven't gotten a call complaining about policing there in two years. People are dealing through the local police officer. They're learning to work with the police, not against them."





Hartley House Municipal Housing Authority Property

Chart Depicts Enforcement Activity Prior to and After Inclusion of "Public Property" into City Code



Arrests increased by 27%

City code summonses increased by 35%

THE NEW ROCHELLE POLICE DEPT
AND
CITIZENS FOR A BETTER NEW
ROCHELLE
ARE PLEASED TO ANNOUNCE THE

GRAND OPENING

**OF A
NEW SATELLITE PRECINCT
~~33 LINCOLN AVENUE~~
SUITE 2**

**WEDNESDAY
January 19th
11:00 AM**

**Press/Media Conference
All interested persons invited
Refreshments**

CITIZENS FOR A BETTER NEW ROCHELLE

ANNOUNCES AN

OPEN HOUSE

FOR THE POLICE MOBILE PRECINCT

WEDNESDAY, MAY 19, 1999, 7:00 p.m. – 9:00 p.m.

**LOCATION: POLICE MOBILE PRECINCT ON
HORTON AVENUE**

**Please join members of the community as we work
together to strengthen community and police relations.**

**Information will be available on employment
opportunities, civilian complaint process and other
community programs.**





00-01

Citizen Police Academy

"Police And Community Together"

Dear Friend:

On February 02, 2000, the New Rochelle Police Department will host a Citizen Police Academy. This program will be conducted once a week, on Wednesdays, for ten weeks. Classes will begin at 6:00 p.m. and end at 8:00 p.m.

The Citizen Police Academy is designed to strengthen the partnership between the New Rochelle Police Department and the community we serve. Citizens of our community will be introduced to the law enforcement and the criminal justice system. Instructors for the Citizen Police Academy will represent every facet of the New Rochelle Police Department. Included among these instructors will be the Police Commissioner, Division Commanders and other police instructors who have developed presentations on selected topics. It is the goal of the Citizen Police Academy to provide the community with an accurate insight of their Police Department and encourage increased interaction between New Rochelle Police Officers and the citizens of New Rochelle.

I encourage you to review the attached material and complete the Citizen Police Academy Application. The completed application should be forwarded to our Training Unit. Our training staff is available to provide you with further information, concerning this program. The training staff can be reached at (914) 654-2323/2324.

Thank you for your interest in the Citizen Police Academy, I look forward to receiving your application and hope to see you on February 2, 2000.

Sincerely,

A handwritten signature in black ink that reads "Patrick J. Carroll". The signature is written in a cursive style with a large, looping initial "P".

Patrick J. Carroll
Police Commissioner



00-01

Citizen Police Academy **"Police And Community Together"**

Program Objectives

The Citizen Police Academy has been designed to strengthen the partnership between the New Rochelle Police Department and the citizens of New Rochelle. The objectives of this program are:

1. Encourage an increased communication and interaction between the New Rochelle Police Officers and the community, which they serve.
2. Dispel misconceptions about the roles, responsibilities and activities of the New Rochelle Police Officers.
3. Provide participants with a basic understanding of police powers and limitations imposed by Law and Police Department policy.
4. Familiarize participants with the dangers, difficulties and ambiguities inherent to modern police work.
5. Foster a citizen-police partnership to combat crime and develop a safer community.

Summer 2002

**SAFETY FIRST
WEAR YOUR HELMET**

KIDS ON WHEELS

On Thursday, June 27, the Police Department held its first bicycle program entitled, "Kids on Wheels". The Department had many bicycles in good to excellent condition that had been found and never claimed. All attempts to locate legal owners had failed. Instead of holding the annual bicycle auction, it was decided to give the bikes away to local young people who had their own bikes stolen, or had never had a bike. A lottery was held and thirty

children were matched up with appropriate bicycles. In addition, each child received a safety helmet and saw a bicycle demonstration performed by Detective Luigi Olcese, a PACT bicycle officer.

Judging by the smiles of the faces of the children selecting bikes and their verbal responses to news reporters from Channel 12, the bike give away was a huge success and helped to make this summer



more enjoyable for at least thirty new bike owners in New Rochelle.



Once again the department will be hosting fishing trips for youngsters this summer. Two trips have already taken place and the dates for the next trips will be Thursday, August 15, Wednesday, August 21 and

Tuesday, August 27. Each trip will take approximately 30 young people for a day of fishing on Long Island Sound. Parental permission slips are necessary for each child. Notification concerning the fishing trips will be made through various Boys and Girls clubs, the Housing Authority, The Police Liason Office and local houses of worship. The necessary permission slip will be available at those locations as well

as the front desk of the Police Department.

These trips are sponsored by the Police Foundation. Please watch Cable TV Channel 71 for further information.

Remember you still have time to make the August Trips.

POLICE ATHLETIC LEAGUE (PAL)

"NIP IT IN THE BUD"

By S. Pierson



The New Rochelle Police Department is working on putting together a local chapter of the Police Athletic League (PAL). A fixed location is being worked on by the PACT unit and a Board of Directors has been selected so that a charter application can be made to the national PAL. It is hoped that a local PAL will help to bridge the gap between the youth of the city and members of the Police Department.

We've often heard the adage "nip it in the bud". It can apply to just about anything you can think of. In the realm of police and community working together, this saying also has its place. It is very easy to observe something which bothers us, or an action which is just not right or activity that is downright illegal and complain to our friends and neighbors. If we do nothing the bud grows and sometimes get out of control. However, just a

little nipping can solve a lot of problems.

Perhaps all it takes is getting involved, maybe just a few kind words or volunteering some time, a community meeting or perhaps a call to the police to apprise them of the situation. Remember, just a little action on your part can cause a lot of "nipping" and thereby save you and those in your community a lot of future grief.

POLICE - CLERGY BREAKFAST

A Police - Clergy breakfast was held on Wednesday, June 26 at St. Catherine's AME Zion Church. The purpose of the breakfast was to open the lines of communication between members of the Police Department and Clergy of the city. Attendance was good, and the dialogue fruitful. Many of those in attendance expressed the common sentiment that this breakfast was the beginning of a great relationship between clergy and police which could only benefit the community.

Thank you to the Police Foundation for hosting the event, and many thanks to the ladies of St. Catherine's who worked so hard in the kitchen and prepared a delicious meal.

SAFETY FIRST

Always wear your helmet while riding your bicycle!

SAFETY TIPS

LOCK WINDOWS BEFORE YOU LEAVE HOME

ALWAYS WEAR YOUR SEAT BELT WHILE RIDING IN THE CAR - REGARDLESS OF THE DISTANCE TRAVELED.

TURN APPLIANCES OFF WHEN LEAVING THE HOUSE



Staff photo/Joe Larese

A view of the New Rochelle Police Department's mobile precinct from the rooftop of one of the buildings in the Hartley Houses yesterday during ribbon-cutting ceremonies marking the new command center.

Police take station to streets

Mobile command center will work at housing complexes

By Ken Ritter
Staff Writer

The Hartley Houses are only a block west of New Rochelle City Hall.

But that distance can seem like miles to residents of the 240 apartments in five identical six-story brick buildings at Brook Street and Horton Avenue.

"You call the police, and it takes an hour for them to come," said Qasim Mann, 25, a Bronx resident who used to live at the Hartley Houses. "The police station is right up the block."

And sometimes, when police come, tensions run high.

Early Saturday morning, for example, undercover detectives raided a Hartley Houses apartment after a monthlong drug operation. They seized crack and made seven arrests. But while the officers were inside 51 Winthrop Ave., someone

broke a window and flattened a tire on their unmarked police car.

"The community here doesn't have a good relationship with the Police Department," said Donald Fortune, 39, vice chairman of the United Tenants Council and a resident security officer at the Hartley Houses.

That's going to change, promised the federal, city and housing officials who gathered yesterday to christen a \$225,000 mobile precinct that the city's Housing Authority bought for the Police Department.

About 100 people gathered for the dedication of the custom-built command center, which was parked on a sparkling autumn day in almost the same spot where the police car was attacked in the rainy shadows early Saturday morning.

The mobile precinct, at 38 feet long, is slightly larger than the city's Rescue 4 fire apparatus and looks like a big blue and white motor home. It was paid for out of a \$750,000 federal anti-crime grant funneled

PUBLIC SAFETY

to New Rochelle by Rep. Nita Lowey, D-Harrison.

"This vehicle is a very important symbol of police and community and government working together," Lowey said yesterday, "to ensure the community is solid and safe so we can bring up our children in a safe place."

The 14-ton vehicle boasts a classroom in the back and is crammed full of high-tech computers, listening devices, cellular telephones, video and fax machines, surveillance cameras and lights. A remote-control closed-circuit camera extends 20 feet up and swivels to scan the surroundings.

"It's really a technological wonder — a very visible sign of a new era in police and community partnership," said Richard Smith, chairman of the New Rochelle Municipal Housing Authority. "Frankly, if I were a drug dealer or a drug buyer and I saw this, I'd think twice about hanging around."

"It looks nice, but what is it

really going to do?" asked Kim Greene, 25, a Horton Avenue resident who hovered at the edge of yesterday's crowd.

Police Commissioner Patrick Carroll and the city promised the command post will be a convenient place for residents to meet with social workers and police, Smith said, adding that 16 hours a day, seven days a week it will be at the Hartley Houses or at the Bracey Apartments on Main Street.

"That's the key to this," Smith said. "If we can't get residents involved, there's only so much the police can do."

Carroll said the command center would play a pivotal role in his Police and Community Together effort and would be an on-site command post at critical incidents.

"If this is a start toward good communication and good relations to talk about our children, education and drug problems, it will be good," Fortune said. "If it makes the Police Department not just a force to enforce, it will be good. But that's the question. We'll see how that relationship will be."