



**A community service initiative formed to lower recidivism, surround juveniles with positive role models, and beautify the City of Waukesha through partnerships with several city departments and non-profit agencies.**



**Waukesha Police**

# Department

## Table of Contents

### **Project S.W.E.E.P. - “Sweeping the streets clean!”**

➤ Summary

➤ S.A.R.A. Model

○ *Scanning*

- "The Problem"

○ *Analysis*

- The history and harms of "The Problem"

- Goals

○ *Response*

- The resources and partnerships that were developed

○ *Assessment*

- How the response impacted "The Problem"

- *Testimonial from a Project S.W.E.E.P. Graduate*

- Obstacles

- Sustainability

- Results from Community Service Volunteer Surveys

- Community Partners –

➤ Appendix A

- The Process -

- *How Project S.W.E.E.P. works, from start to finish!*

➤ Appendix B

- Mentor/ Leader Element

➤ Appendix C

- Supporting Documents –

- [www.WaukeshaNow.com](http://www.WaukeshaNow.com), Curt Otto, November 29, 2006

- *Waukesha Freeman*, Brian Huber, December 29, 2006

- *Milwaukee Journal Sentinel*, Darryl Enriquez, April 15, 2007

The City of Waukesha Police Department  
presents:

## Project S.W.E.E.P.

### **Summary:**

Prior to the inception of Project S.W.E.E.P., the City of Waukesha lacked a community service initiative that held juveniles accountable for their actions, following municipal court proceedings. Project S.W.E.E.P. (**S**ervice, **W**illingness, **E**ncourage, **E**mpower, and **P**olicing) provides an opportunity for municipal juvenile offenders to correct their actions by serving community service. Prior to Project S.W.E.E.P., juveniles failed to complete their court obligation because community service opportunities did not exist or their parents elected to pay the forfeiture, which ultimately failed to hold the juvenile accountable.

The City of Waukesha Police Department created partnerships with the Municipal Court, the Waukesha Citizens Police Academy Alumni Association (W.C.P.A.A.A.), and several municipal departments and non-profit agencies during Project S.W.E.E.P.'s development. The most integral partnership of Project S.W.E.E.P. is with the W.C.P.A.A.A. These individuals mentor the juveniles through their court obligation and in some instances befriend the juveniles. Volunteer opportunities exist with municipal departments and non-profit agencies several days per week and adult mentors from the W.C.P.A.A.A. accompany the juveniles during each occasion.

### **Goals:**

1. Decrease recidivism.
2. Surround juveniles with positive role models.
3. Beautify the City of Waukesha and assist non-profit agencies.

### **Results :**

- ***Decreasing recidivism*** --- According to Municipal Court Judge Joseph Cook, “only 5% of the kids referred to Project S.W.E.E.P., revisit municipal court after their initial appearance.”
- ***Mentors acting as positive role models*** --- The mentor’s abilities to act as positive role models was recognized in the *Waukesha Freeman Newspaper* and *Milwaukee Journal*

*Sentinel*. According to the exit surveys (refer to “Survey Results”), 94% of the juveniles believe the mentors act as positive role models, with 69% stating they strongly agree.

- ***Beautifying the City of Waukesha and assisting its non-profit agencies*** --- Business owners, citizens, city administrators, and non-profit agencies have benefited from their partnership with Project S.W.E.E.P. Project SWEEP has beautified the City of Waukesha by completing work that is often neglected because of budget constraints or lack of manpower. According to Karen Tredwell, Executive Director of the Food Pantry of Waukesha County, “Project S.W.E.E.P. saves the Food Pantry \$250 per month because we no longer have to hire a cleaning service. This savings is now used to buy much-needed food and supplies for our clients, which is the best use of our money.”

## Scanning (“*The problem*”):

Project S.W.E.E.P. began, in the City of Waukesha, under the auspice of an effort to beautify the city and curb a graffiti epidemic. The City of Waukesha received 175 gang related graffiti complaints in 2005 and 279 complaints in 2006. Graffiti Effacers, a non-profit organization that services Waukesha County,

was overwhelmed with these complaints.

Without timely removal, rival gang members tagged their gang monikers over the initial gang graffiti, creating an even more unattractive neighborhood.



The City of Waukesha, like *many* other cities, experienced budget cuts. As a result, many city owned parks, walkways, and common areas were neglected and in need of attention. City departments lost personnel and were expected to do more with less. Several non-profit organizations within the City of Waukesha also lacked proper manpower to service their clients and to maintain their facilities.

Prior to Project S.W.E.E.P.'s inception, the City of Waukesha Municipal Judge and Police Department Administrators believed juvenile municipal offenders were not held accountable for their actions after receiving municipal citations. In the past, the Municipal Judge assigned community service hours to the municipal offenders which were rarely served. Instead, many parents of the offenders paid the fines for their child. Or juveniles would fail to address the situation, resulting in a *capias*, warrant, or driver's license suspension. The juvenile, in turn, was not held accountable for their actions. Waukesha needed a way to hold juvenile offenders responsible for their choices and in turn decrease recidivism.

## Analysis:

Project S.W.E.E.P. is a community service initiative that developed during the Summer of 2006. The premise of this program is to hold juvenile municipal offenders accountable for their actions while surrounding them with positive role models and assisting non-profit agencies and city departments. After many meetings with police administrators, the municipal judge, non-profit agencies, and city departments, Project S.W.E.E.P. officially began mentoring juvenile municipal offenders on October 18, 2006. The elements and process of the project are constantly reviewed but the goals remain the same.

### *Project S.W.E.E.P. Goals Based Upon Analysis*

1. Decrease Recidivism.
2. Provide positive role models for the juvenile municipal offender through interactions with a member from the Waukesha Citizens Police Academy Alumni W.C.P.A.A.A. during each community service event.
3. Beautify the City of Waukesha and assist non-profit agencies.

### *Society is Failing to Assist the Fringe Kids*

Most of the juveniles in this program are neglected by their parents, schools, or community, and lack positive role models. Many of these children have several things in common; a single parent home, a history of drug or alcohol abuse, behavioral issues, sexual, physical, and/ or emotional abuse. The majority of these juveniles have been labeled as “fringe kids,” “at risk youths,” “kids at a crossroad,” or “ones who have fallen through the cracks.” Project S.W.E.E.P. ignores all of these labels and seeks to provide leadership for each child.

### *Harms from the Fringe Kids*

When juveniles decide to violate the law they create a challenging environment for the general public. Graffiti devalues property, creates an unattractive landscape, increases gang activity, and strikes fear into many citizens. Disorderly conduct, curfew violations, truancy, smoking, underage alcohol consumption, and drug possession are common plagues amongst adolescence. Many of these municipal violations occur in the City of Waukesha Middle and High Schools. These juveniles are harming the learning environment for themselves and their entire school. Curbing these behaviors and holding the juvenile accountable for their actions will benefit the child, the community, and society.

### *The Problem Before Project S.W.E.E.P.*

Prior to Project S.W.E.E.P., the juvenile municipal offender was expected to locate a community agency and complete their hours without a mentor or positive role model. As outlined earlier, many opportunities were limited because adult supervision was needed at many community service locations. The most crucial element of Project S.W.E.E.P. is the upstanding citizens from the W.C.P.A.A.A. that are in place to act as positive role models for the juvenile municipal offender. The mentors encourage and empower the youth to make better choices.

### *Project S.W.E.E.P. Development*

As Project S.W.E.E.P. developed, several concerns throughout the City of Waukesha were identified. Graffiti Effacers was inundated with graffiti complaints throughout 2006. Graffiti Effacers is a program sponsored by the Adaptive Community Approach Program (A.C.A.P.), a non-profit community service organization for people with physical disabilities. Most of the volunteers for Graffiti Effacers are confined to wheelchairs and are unable to use their arms. Some of the complaints take an entire day because of the extensive damage. It was evident that Graffiti Effacers needed assistance.

A second concern, prior to Project S.W.E.E.P., was the lack of adults available to mentor juvenile offenders. Juveniles were given community service hours and were expected to complete the hours at a community agency of their choice. Many community service opportunities were limited because adults were needed to oversee the project. Some opportunities did not accept juveniles less than 16 years of age because of liability insurance concerns. Juveniles also avoided their hours of community service, thus failing to take responsibility for their actions. These juveniles either lacked the maturity to complete this court obligation or did not have the appropriate support and guidance.

Project S.W.E.E.P. created several partnerships within the City of Waukesha. There are constant assignments at each of these agencies to be filled by community service volunteers. Project S.W.E.E.P. mentors perform the work with the juveniles and encourage the juveniles to complete their court obligations. The mentors also stress that the community service work being done by Project S.W.E.E.P. is beautifying the City of Waukesha and making a difference for the non-profit agencies.

When Project S.W.E.E.P. was in the development phase, the cleanliness of police department automobiles was a concern. After the fleet detailing was cut from the budget approximately six years ago, officers spent time cleaning the interior of their assigned fleets. This prevented officers from performing official police duties and also lowered department

morale. The City of Waukesha Police Department previously spent \$1,152 per year to have 18 patrol fleets detailed twice a year. Project S.W.E.E.P. detailed the police fleet on a weekly basis, allowing officers to enjoy a clean vehicle and to concentrate their efforts on police work.



*Project SWEEP cleaning police training house.*

Firearms and Defensive and Arrest Tactics (D.A.A.T.) training was often cut short because officers needed to clean the facilities prior to the end of their training. If officers did not clean the facility, the range manager would have to spend his duty and off-duty time cleaning and maintaining the range. Night shift officers had to clean when time permitted, possibly taking away

from proactive policing. Officers now benefit from longer training days because Project S.W.E.E.P. has taken on this responsibility.

## **Response:**

***S- SERVICE*** - Provide juvenile municipal offenders the opportunity to perform community service in lieu of paying a citation. This community service initiative beautifys the City of Waukesha and aids the associated agencies, while holding the juvenile municipal offender accountable for their actions. Project S.W.E.E.P. creates positive partnerships with many community non-profit agencies and municipal departments.

***W- WILLINGNESS*** - The Waukesha Citizens Police Academy Alumni (W.C.P.A.A.A.) members possess the willingness to mentor and supervise juvenile municipal offenders as they complete their community service hours. The alumni group encounters diverse ethnic backgrounds, deal with behavioral and mental health issues, teen pregnancy, and juveniles who have been sexually, physically, and emotionally abused by their parents. Many alumni members have befriended juveniles and remain in contact with them after their community service is complete. The W.C.P.A.A.A. efforts were recognized in the December 26, 2007 edition of the Waukesha Freeman (*Appendix C*).

***E- ENCOURAGE*** - The mentors (W.C.P.A.A.A.) encourage the juvenile municipal offenders to make better decisions in their life. The mentors share their life experiences with the juveniles and act as positive role models. They continue to encourage the juveniles to make positive decisions. Project S.W.E.E.P. formed a partnership with Big Brothers Big Sisters to aid in this effort.

***E- EMPOWER*** - The Municipal Court and



mentors empower the juvenile municipal offender to take responsibility for their actions. The Project S.W.E.E.P. mentors attempt to empower juveniles to continue community service after their court obligation.

***P - POLICING*** - Juvenile municipal offenders will have the opportunity to have positive interactions with police officers as they complete a portion of their community service hours at the police station and training facilities. Police Officers and School Resource Officers have the discretion to refer juveniles to Project S.W.E.E.P., essentially providing juveniles another chance to correct their mistake.

Prior to Project S.W.E.E.P., juvenile municipal offenders needed outlets for community service. After discovering this need for community service outlets and mentors, Project S.W.E.E.P. forged several partnerships.

**I.** The creation of a partnership with ***Municipal Court and Judge Joseph Cook***. Judge Cook is committed to referring juvenile offenders to the program, strengthening the legitimacy of Project S.W.E.E.P.

**II.** The creation of a partnership with the ***Waukesha Citizens Police Academy Alumni Association*** (W.C.P.A.A.A.) to ensure mentorship for juvenile municipal offenders.



**III.** The creation of partnerships with several ***community non-profit agencies and city departments***. These partnerships provide avenues for municipal juvenile offenders to complete their assigned hours of community service.

**IV.** The establishment of a partnership with ***Big Brothers Big Sisters*** for juvenile referrals who may need extra support / guidance.

**I.**

Judge Cook remains excited about providing juvenile municipal offenders a second chance. With definite community service opportunities and positive role models surrounding each juvenile, the municipal offender is more likely to complete their court obligation. The municipal court envisioned such a need, which held juveniles responsible for their municipal violation, for some time - Project S.W.E.E.P. fills this void.

Judge Cook also encourages officer involvement in making referrals to Project S.W.E.E.P. He values the officer's judgment as they interact with the municipal offender at the



time of their offense. At such a time the officer may determine that the juvenile made a poor decision and is remorseful for their actions. After making a character judgment of the juvenile municipal offender, the officer may use his discretion and potentially refer the juvenile for community service through Project S.W.E.E.P. The officer makes this request by noting on the juveniles citation or within the incident report for a “Project S.W.E.E.P. Referral.”

The three School Resource Officers (S.R.O.) assigned to the City of Waukesha’s High Schools are in regular contact with the students at their respective schools. In the past, students of these three high schools, who received municipal citations, were often referred to the S.R.O. for community service. The S.R.O.s were often inundated with tasks at their school and could not manage individual community service hours. Prior to Project S.W.E.E.P. clerical and maintenance staff often supervised the municipal offenders at the schools, again sacrificing other valuable responsibilities. With Project S.W.E.E.P. in place, the S.R.O. and the school staff can focus on their job descriptions. The Project S.W.E.E.P. staff utilizes the S.R.O.s on a regular basis. When the juvenile is absent or tardy to their assigned community service, Project S.W.E.E.P.’s staff often requests assistance from the S.R.O. The school officer usually speaks to the student about their responsibility to the municipal court and for a change in behavior.

## II.

Several community agencies have provided community service opportunities to municipal and state offenders in the past. Many of these agencies require an interview or only allow adults to work at their facilities, therefore turning away several prospective community service candidates. These departments and agencies are now able to access the community service volunteers (juvenile municipal offenders) more readily because they are accompanied by a responsible adult (W.C.P.A.A.A. mentor) for each volunteer opportunity. The non-profit agency or city department can maintain their focus on providing services to their clients and allow Project S.W.E.E.P. mentors and juvenile volunteers to perform maintenance of their facilities.



The W.C.P.A.A.A. formed several partnerships within the City of Waukesha. This group, along with the municipal offenders, accomplishes several community projects throughout each week. The Project S.W.E.E.P. mentors and juvenile volunteers work 4-5 days on a weekly basis at several non-profit agencies and municipal departments throughout the city. Project

S.W.E.E.P. assists the Police Department, allowing officers to train longer at the police range and training house.

Several city department supervisors have utilized Project S.W.E.E.P.'s mentors and juvenile volunteers. The Waukesha Metro Transit Center, Park & Recreation Department, and Business Improvement District have reaped the benefits of Project S.W.E.E.P. This project has performed landscaping duties at the Waukesha Metro Transit Center Operations Facility and partakes in monthly sweepings of the downtown transit center. Project S.W.E.E.P. assisted the Park and Recreation Department with the set-up and removal for the annual National Night Out festivities at Frame Park. The Business Improvement District utilizes Project S.W.E.E.P. on a monthly basis for street sweepings, snow removal when needed, and assistance with downtown festivities

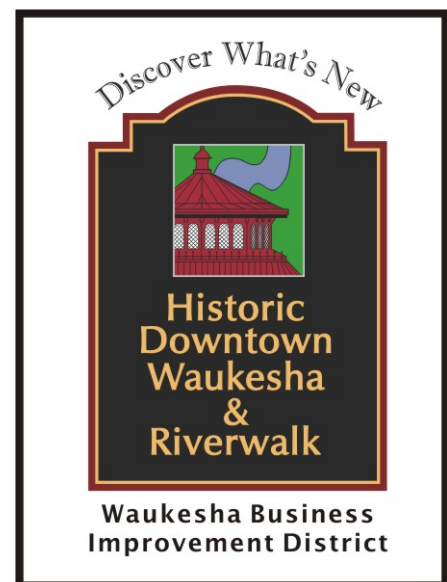
A network of Project S.W.E.E.P. community service agencies was established to increase communication. When an associated agency needs assistance with a large community service project or other general maintenance they are encouraged to contact Project S.W.E.E.P. Project S.W.E.E.P. staff will then coordinate an effort of mentors (W.C.P.A.A.A members) with juvenile municipal offenders to assist the agency in need.



### III.

#### Community Partners / Tasks

- **Waukesha Citizens Police Academy Alumni Association (W.C.P.A.A.A.)**  
- Alumni members supervise / mentor juvenile municipal offenders.
- **Graffiti Effacers -- Adaptive Community Approach Program (A.C.A.P)**  
- Efface graffiti throughout City of Waukesha on need basis.
- **Waukesha Business Improvement District**  
- Pre-arranged bi-monthly cleaning of downtown streets, sidewalks, and parking lots. (*Cleaning efforts also focused around downtown events – Art Crawls, Carl Zach Cycling Classic, and Parades.*)



- Juvenile municipal offenders dressed as characters for Harry Potter Festival and Christmas Parade.

▪ **Food Pantry of Waukesha County**

- Bi-weekly maintenance of building and assist with large food drives/ collections.

▪ **Interfaith Senior Programs**

- Fall and Spring yard cleanup dates for senior citizens.

- Office work is also available.

▪ **Waukesha Police Department**

- Weekly cleaning of police range and maintenance at Police Department on need basis.

▪ **Donna Lexa Community Art Center**

- Weekly cleaning of facilities. (Art Center is for individuals with disabilities)

▪ **United Way of Waukesha County**

- Assist agency with distribution of 2-1-1 leaflets.

▪ **Waukesha Department of Parks, Recreation, and Forestry.**

- Pick up litter and trash along Fox River walk and city parks.

▪ **St. John Neumann Congregation**

- Bi-monthly cleaning of congregation.

▪ **Waukesha Metro Transit**

- Sweeping of downtown transit center and landscaping at operations facility.

▪ **A.R.C.H. -- Association for the Rights of Citizens with Handicaps**

- Clean facility on need basis.

▪ **Hebron House of Hospitality, Inc.**

- Clean facilities on need basis.

#### IV.

▪ **Big Brothers and Big Sisters of Metropolitan Milwaukee**

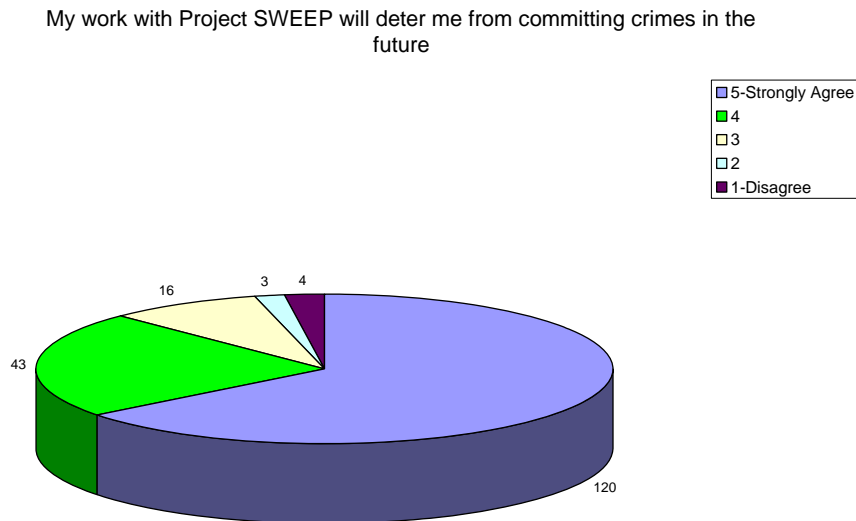
The partnership created with Big Brothers Big Sisters illustrates Project S.W.E.E.P.'s dedication to the future of the juvenile municipal offender. Project S.W.E.E.P. mentors surround the juvenile with a positive atmosphere throughout their community service and would like to continue that with a potential match with a Big Brother or Big Sister.

## Assessment:

### S.W.E.E.P.'s Responses Impacting "The Problem"

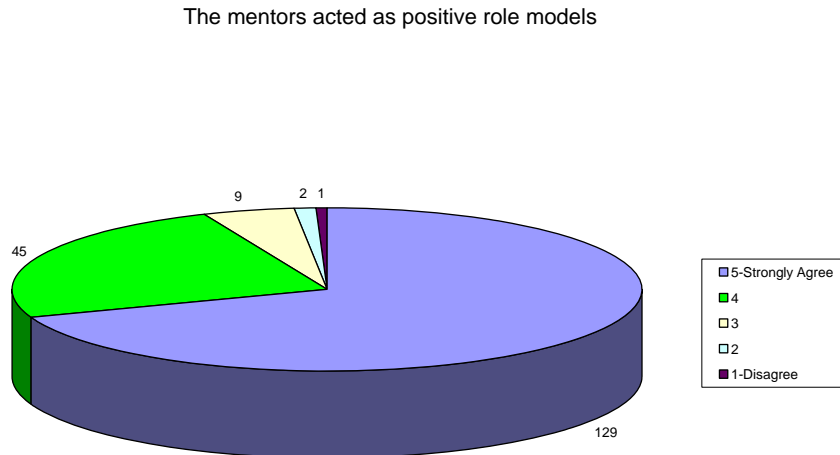
#### Decreasing Recidivism

Project SWEEP has decreased recidivism, according to Municipal Judge Joseph Cook, *"only 5% of the kids referred to Project S.W.E.E.P., revisit municipal court after their initial appearance."* The juvenile municipal offenders also complete exit surveys (see Survey attached within Appendix A) when they complete their community service obligation. According to the exit surveys (see below), 88% of the juveniles believe their work with Project S.W.E.E.P. will deter them from committing crimes in the future, with 65% noting they "strongly agree." These statistics demonstrate decreased recidivism through Project S.W.E.E.P. Judge Cook sees fewer repeat juvenile offenders in his courtroom and juveniles are deterred from committing future crimes because of their community service work experience.



## Surrounding Juveniles with Positive Role Models

According to the exit surveys (refer to below graph – “**The mentors acted as positive role models**”), 94% of the juveniles believe the mentors act as positive role models, with 69% stating they “strongly agree.”



The *Waukesha Freeman Newspaper* attributed the success of Project S.W.E.E.P. to the positive mentorship provided by the W.C.P.A.A.A. members. Matt Jendrzejczyk, Project S.W.E.E.P. mentor commented,

*It takes a couple of volunteer sessions to get kids to open up to the mentors, but they usually come to a point where they can talk about what's going on in their lives. The mentors can direct kids to their school police officers, spiritual leaders or other community agencies for help rather than dispensing direct advice. The majority of kids, 99.9 percent of them are great kids. They just made a bad choice. I tell them life is about choices. Look at it that way<sup>1</sup>.*

The following testimonial was obtained from a Project S.W.E.E.P. graduate who completed a 15 hour community service obligation after receiving a municipal citation for possession of smoking materials. Her exit essay depicts the strong relationship that she built with two Project S.W.E.E.P. mentors, and reflects how the mentors acted as positive role models.

*My experience for the sweep project was not what I expected. What I did like was meeting a volunteer named Ona. She was there working with me for most of my hours. Ona and I talked about a lot of things and she even lectured me and told me about her experiences with smoking and how bad it is. What she told me stuck in*

---

<sup>1</sup> Brian Huber, “Project SWEEP reaching out, breaking through: Mentors credited with success of program for juvenile offenders,” *Waukesha Freeman*, 26 December 2007, Section Local, page 3A

*my head [until] this day. I think Ona is a great person and so is Linda. [I've] learned a lot from this project. The best part about the project was cleaning the*

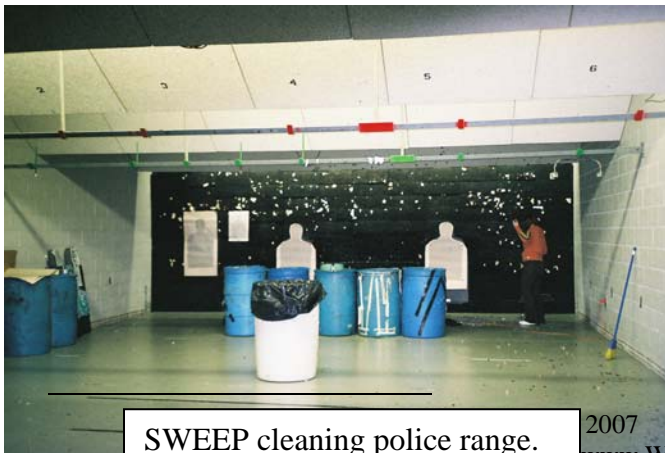
*kitchen with Ona, we made jokes and she made me laugh a lot. [I] even realized that the cops were pretty nice. The part [I didn't] like about the project was taking my time out of my schedule to do the hours but [I didn't] really mind, sometimes I looked forward to it. It may be weird of me to say this but [I'm] glad that I got caught smoking and ended up with a ticket because the judge gave me a chance to do something without paying the ticket and [I] think everyone deserves a chance. You learn from the mistakes that you make and I learned from mind. When my 15 hours were up [I didn't] want to stop seeing Ona or even Linda for that matter. I gave them my number so they could call me whenever they needed a volunteer for some extra help. Linda even offered to be a reference for jobs and [I] know that, that would be a big help. Thanks project sweep for giving me the chance to serve my community.<sup>2</sup>*

### **Beautifying the City of Waukesha and Assisting Non-Profit Agencies**

These beautification efforts and assisting non-profit agencies have been recognized by community leaders, citizens, downtown merchants, as well as several publications. The Food Pantry of Waukesha County, according to Executive Director Karen Tredwell, currently its \$250 monthly cleaning fee due to the services provided by Project S.W.E.E.P. This savings is now used to buy much-needed food and supplies for our clients. Curt Otto, blog author of [www.WaukeshaNow.com](http://www.WaukeshaNow.com), commended the adult mentors and juvenile municipal volunteers within his blog commentary for their efforts while sweeping the streets of downtown Waukesha<sup>3</sup>.

### *Obstacles during creation and while maintaining Project S.W.E.E.P.*

#### Union Contracts



SWEEP cleaning police range.

2007

[www.WaukeshaNow.com](http://www.WaukeshaNow.com), 29 November 2006

S.W.E.E.P. avoids this conflict because many of the tasks are out of the scope of the municipal maintenance crews.

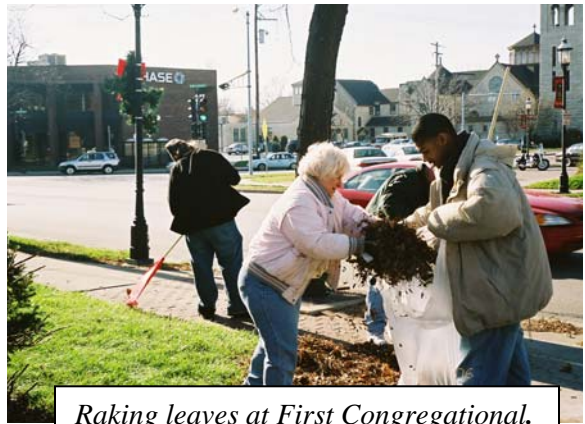
### Officer Safety Concerns

Some police personnel were concerned about the juveniles' access to the police department buildings and vehicles. This became a legitimate concern when a male juvenile wrote the license plates of the unmarked detective vehicles on his hand as he cleaned police vehicles in the department garage. The Project S.W.E.E.P. staff immediately addressed this situation by removing the individual from the program and preserved officer safety concerns by removing the police department from the weekly S.W.E.E.P. work schedule.

There will always be a concern of the juveniles' exposure to the police department's sensitive material. Project S.W.E.E.P. does assist at the police department when a need arises and are restricted to the main level of the police department.

### Lack of Participation from W.C.P.A.A.A. Mentors

Even though approximately 40 W.C.P.A.A.A. members have shown an interest to participate as mentors, only twenty members are actively involved in the program. Members of the Citizens Police Academy are dedicated community members and are often committed to many groups and organizations. It is often difficult to ask more of people who give so much. S.W.E.E.P. is actively recruiting more Academy alumni members to become mentors.



*Raking leaves at First Congregational.*

### Disciplining Juveniles

At times, the S.W.E.E.P. staff has to remind the mentors that these juveniles do not know how to behave because of their lack of structure and role models in their lives. Many times the mentors are the only ones holding the juveniles accountable for their actions. Some mentors become frustrated with the juveniles in the program who misbehave. The Project S.W.E.E.P. staff is quick to remove a juvenile who is violent or who has egregious disrespect for others. The juveniles are expected to adhere to the "**Rules for Community Service Volunteers,**" (Appendix A). It is a fine line between keeping mentors emotionally satisfied while providing guidance to struggling youth and is an area of constant reflection for the Project S.W.E.E.P. staff.

## O.S.H.A Concerns

O.S.H.A. requirements were concerns of city administrators as Project S.W.E.E.P. developed. Project S.W.E.E.P. ensures that juveniles will remain safe during their community service obligation, mandating that juveniles may not operate powered machinery besides vacuum cleaners and may not climb ladders or scaffolding.

### *Sustaining Project S.W.E.E.P.*

Sustaining Project S.W.E.E.P. requires a dedicated coordinator and continuous education for the adult mentors. The coordinator communicates with the mentors, juvenile offenders, and the municipal court. A Project S.W.E.E.P. representative needs to interact with the juvenile municipal offender and their parent at their court appearance. The coordinator needs to maintain accurate records of community service hours and communicate with the Municipal Court any behavioral issues. A schedule of weekly and monthly activities has been developed by the current S.W.E.E.P. coordinators. Requests are made each week for long term projects and future events. The coordinator determines whether enough community service volunteers exist for each proposed projects. Project S.W.E.E.P. operates at ***no cost to the taxpayers or to the agencies that it assists.***

The mentors of Project S.W.E.E.P. also request continuing education in several disciplines such as behavioral issues; mental health; physical, sexual and emotional abuse; teen pregnancy, and drug abuse. This project will continue to provide training in order to meet the needs of the mentors and juvenile municipal offenders.



## **Agency and Officer Information:**

This community service initiative is conducted at the officer level with the guidance and support of the City of Waukesha Municipal Judge Joseph Cook and Waukesha Police Department Administration. The lead officer is assigned to the Community Policing Unit and has the flexibility to develop this project because he does not have to respond to calls for service. The Project S.W.E.E.P. creator dedicates 20 hours per week to this project. Personal visits and phone calls are needed in order to create the partnerships with the community agencies. The lead officer handles the discipline of the municipal offenders, under the guidance of Judge Cook.

Linda Evanoff, Project S.W.E.E.P. Coordinator, volunteers 15-20 hours per week. Ms. Evanoff coordinates the efforts of the Citizens Police Academy Alumni members (mentors) with the community service volunteers (juvenile municipal offenders) at the assigned service location. Mrs. Evanoff also assures that the juveniles hours are recorded with the Municipal Court after their obligation is complete with Project S.W.E.E.P.

### **Police Specialist Tim Probst**

Community Policing Unit

1901 Delafield Street

Waukesha, WI 53188

(262) 524-3831

FAX (262) 650-2581

[tprobst@ci.waukesha.wi.us](mailto:tprobst@ci.waukesha.wi.us)



*Project SWEEP Staff - Linda Evanoff (S.W.E.E.P. Coordinator), Officer Probst, Becky Ehrmann (Court Clerk), Judge Joseph Cook*

## **Community Partners**

### **Waukesha Municipal Court**

Volunteer Center of Waukesha

**Graffiti Effacers**

*Donna Lexa Community Art Center*

### **Waukesha Business Improvement District (B.I.D.)**

**Hebron House of Hospitality, Inc.**

Food Pantry of Waukesha County

### **Interfaith Senior Programs**

**Waukesha Parks, Recreation, and Forestry Department**

*Big Brothers Big Sisters of Metropolitan Milwaukee*

### **Waukesha Citizens Police Academy Alumni Association**

**(W.C.P.A.A.A.)**

**Linda Evanoff**

**Ken Graser**

**Roger Igielski**

**John Cartwright**

**Doug Wipfli**

**Peggy Bromley**

**Marge Burg**

**Steve Neis**

**Dawn Lawien**

**Teri Kaye**

**Maria Paz**

**Joe Inzeo**

**Mary Brevold**

**Sue Dregne**

**Gene Shoemaker**

**Randy Radish**

**Jean Lindner**

**Linda Filiatrault**

**Brian Trautman**

**Reno Moldenhauer**

**Terry and Donna Inman**

**Tom and Ona Metcalf**

**Mike and Dori Inzeo**

**Matt and Jennifer Jendrzejzyk**

**Cliff Stanish**

**Leigh Lannigan Stanish**

### **United Way of Waukesha County**

**Waukesha County Parks  
System**

First Congregational United Church of Christ

**St. John Neumann Congregation**

**ARCH – Association for the Rights of Citizens with  
Handicaps**

**Waukesha North High School -- School Resource Officer Bill Beglinger**

**Waukesha South High School -- School Resource Officer Dave Van Ells**

**Waukesha West High School -- School Resource Officer Kevin Rice**

# Appendix A



## The Process

# The Process

Partnerships have been created with several agencies within the City of Waukesha for community service. Many of the projects center around beautifying the City of Waukesha and assisting non-profit organizations. One of Project S.W.E.E.P.'s most significant partnerships has been with the Waukesha Citizens Police Academy Alumni Association. This group supervises and mentors the juvenile municipal offender, *a partnership the municipal court was lacking*. After forming a similar partnership, the following process may be followed create a successful community service initiative.

➤ **Juvenile receives a municipal citation.**

- *(During this encounter, the arresting / issuing Officer may make a recommendation for Project S.W.E.E.P.)*

➤ **Juvenile makes appearance at Municipal Court with parent(s).**

*(Juvenile makes appearance in Judge's chambers—with parent(s), Court Clerk, City Attorney, a School Resource Officer, School Administrator, and Officer Probst or Linda Evanoff, S.W.E.E.P. Coordinator (present to describe Project S.W.E.E.P.))*

➤ **If / When the juvenile pleads guilty or no contest, the judge may recommend community service in lieu of a monetary fine.**

*(Judge Cook will not allow a defendant to serve community service hours if the defendant has a violent history or has failed to complete community service hours in the past.)*

➤ **When the judge makes the recommendation for community service, the juvenile is referred to Project S.W.E.E.P. for community service opportunities or directly to their assigned School Resource Officer.**

- *(If the School Resource Officer is unable to accommodate the municipal offender at the high school, the S.R.O. refers them to S.W.E.E.P.)*

-- *If the juvenile is **not** interested in the community service offered by Project S.W.E.E.P., the juvenile may contact another community service agency of their choice to complete their hours. It is their obligation to advise the court of their status with community service.*

➤ **If the juvenile is interested in proceeding with Project S.W.E.E.P., Officer Probst or Linda Evanoff explains Project S.W.E.E.P.**

-- The juveniles are also provided with the following

- ✓ Project SWEEP Pamphlet (outlines project)
- ✓ Hours form (submitted to municipal court by S.W.E.E.P. coordinator after community service obligation is complete) (**ATTACHED**)
- ✓ “Rules for Community Service Volunteers” (**ATTACHED**)
- ✓ “Emergency Contact” form (S.W.E.E.P. retains this form throughout their community service obligation.) (**ATTACHED**)

*Project SWEEP staff also takes copious notes detailing the juveniles name, phone number, school, violation, required number of service hours, and due date*

**Before the juvenile leaves the municipal court they are instructed to contact or re-contact Project S.W.E.E.P. in order to obtain a community service work schedule.**

- **When the juvenile offender contacts / re-contacts Project S.W.E.E.P., they are instructed to meet at a specific time and assigned location for their first volunteer community service obligation.**

*Project S.W.E.E.P. has several predetermined tasks through multiple community agencies that are scheduled to be completed on particular dates and locations.*

- **At each community service obligation, the municipal offender is provided with the date, time, and location of their next obligation.**

*In most instances, the juveniles are provided a “work schedule” for a week to two weeks at a time.*

- **If a juvenile excessively misbehaves, is late for their obligation, or violates any law, they are reported to Officer Probst.**

*Precedents have been established from prior incidents to enforce Project S.W.E.E.P. violations (approved by Judge Cook). Most violations result in additional hours.*

-- 1<sup>st</sup> offense (late/ absent) -- WARNING

-- 2<sup>nd</sup> offense (late/ absent) – 1 HOUR PENALTY

-- 3<sup>rd</sup> and subsequent offense (late/ absent) – 2 HOUR PENALTY

-- Display of attitude results in a warning for the first encounter and deduction of hours for the second and subsequent episodes.

- **During the juveniles’ last “shift,” they are asked to complete the “Project S.W.E.E.P. Survey”** (*see attached*).
- **When the juveniles’ hours of community service are completed, Project S.W.E.E.P.’s staff sends a correspondence to Municipal Court, documenting the completed hours of community service.**  
(*The Municipal Clerk will properly document the hours for the courts records.*)
- **Project S.W.E.E.P. Staff sends a “Good-bye” letter to the juvenile after their hours are completed** (*see attached*).  
(*The letter reinforces S.W.E.E.P. ’s goals and provides the juvenile with several resources for future reference.*)
- **If a Project S.W.E.E.P. Mentor believes a juvenile could benefit from additional guidance, the juvenile may be referred to Big Brothers Big Sisters. The Project S.W.E.E.P. staff has a partnership with Big Brothers Big Sisters and forwards the potential little brother / sister an application packet. The referral is only made after consulting with a parent / guardian.**

**Other elements:**

○ ***Extensions***

- The Municipal Clerk will grant extensions on due dates for community service if the juvenile has made an effort to complete their hours. Project S.W.E.E.P. staff communicates regularly with Clerk regarding similar issues.

○ ***Request for dismissal of municipal citation***

- The Municipal Judge will, on occasion, ask for a report on the behavior of the juvenile offender. Upon the Judge’s discretion, the citation is dismissed after completing the community service.

○ ***Request for change in conviction charge***

- The Municipal Judge will, on occasion, ask for a report on the behavior of the juvenile offender. Upon the Judge’s discretion, the conviction charge can be changed based upon a satisfactory report. This benefits the juvenile, so a criminal conviction does not exist on their life long criminal record.

○ *Request for removal from Project S.W.E.E.P.*

- Project S.W.E.E.P. has the ability to remove a juvenile for excessive absences, tardiness, poor attitude, future criminal behavior, and behavior detrimental to officers or to the other participants of Project S.W.E.E.P.

○ *Request for additional hours*

- The Municipal Judge will ask for a trial period with Project S.W.E.E.P. to determine whether the juvenile is taking responsibility for their actions. If the juvenile performs well during the trial period, the Judge will allow for additional hours.

○ *Juveniles request for Project S.W.E.E.P.*

- On occasion, a juvenile will ask the Judge for hours of community service through Project S.W.E.E.P. by addressing a letter to his attention. Most of these have come from juveniles who have heard about our program through the media or their classmates and would like to take responsibility for their actions.

*(Hours Form – submitted to Municipal Court Clerk by S.W.E.E.P. Coordinator)*



\_\_\_\_\_ is ordered to complete \_\_\_\_\_ hours of community service.  
Contact an area community service organization and have the hours completed by \_\_\_\_\_.

<b>Organization</b>	<b>Supervisor Name (PRINT)</b>	<b>Supervisor Signature</b>	<b>Hours Completed</b>

Mail or fax this form when your hours are completed to:  
Waukesha City Hall  
Municipal Court  
C/o Becky Ehrmann  
201 Delafield Street  
Waukesha, WI 53188  
**OR**  
FAX 262-650-2570



*(Rules – given to juvenile prior to beginning community service)*

**Project S.W.E.E.P. Rules**  
*For Community Service Volunteers*

1. Have fun !!!!! Your hours of community service are improving the quality of life for the City of Waukesha. Your efforts are truly making a difference.
2. Profane language is **not** acceptable.
3. Smoking is **not** allowed. All S.W.E.E.P. community service volunteers are under the legal age to smoke. All other tobacco products and lighters are also not allowed. All violators of this rule will be subject to a citation.
4. There shall be no inappropriate touching.
5. If a mentor believes that they cannot control the behavior of a community service volunteer, that volunteer may be asked to leave. The behavior will be reported to Officer Probst and the appropriate discipline will be decided.
6. Transportation to and from community service is the responsibility of the municipal offender. Project S.W.E.E.P. mentors will not transport any juvenile at any time.
7. Community Service volunteers are not allowed to operate powered equipment, handle chemicals, or leave their feet (i.e. climb ladders, scaffolding, fences, etc.), with the exception of vacuum cleaners.
8. If a community service volunteer or a mentor receives a monetary donation, please decline the offer. If the person is insistent, donate the money to Project S.W.E.E.P. for supplies.
9. Community service volunteers are **not** allowed to talk on their cell phones, text message, or listen to ipods or walkmans while completing their hours of community service. Volunteers should bring their cell phones to each community service project in order to call for a ride or for an emergency.
10. Do not spit phlegm in public buildings, on sidewalks, or areas frequented by the public.
11. Be polite, respectful, and courteous to the Project S.W.E.E.P. mentors and to other people you come into contact with. The mentors are volunteering their own time to assist you with your community service hours.
12. Community service volunteers shall not attend community service projects while under the influence of alcohol or any other non-prescribed narcotic drug.
13. **Linda Evanoff (414-303-6665) must be contacted 24 hours prior to community service** if you are unable to attend.

**\*\* Violation of these rules will result in additional hours or penalties \*\***

*(Emergency contact form – info collected/ maintained while juvenile is active with Project S.W.E.E.P.)*



## Emergency Contact

**NAME:** \_\_\_\_\_

**ADDRESS:** \_\_\_\_\_

**PHONE NUMBER (S):** \_\_\_\_\_

**PARENT'S NAMES:** \_\_\_\_\_

**EMERGENCY CONTACT:** \_\_\_\_\_

**SCHOOL:** \_\_\_\_\_

**HOURS NEEDED:** \_\_\_\_\_

**OFFENSE:** \_\_\_\_\_

**LIMITATIONS:**

\_\_\_\_\_  
\_\_\_\_\_

**NOTES** \_\_\_\_\_

\_\_\_\_\_  
\_\_\_\_\_  
\_\_\_\_\_



## Survey

Your participation in Project S.W.E.E.P. has made a difference in the City of Waukesha through your hours of community service. Please complete the following survey so we can improve Project S.W.E.E.P.

**Please mark an “X” in the appropriate box for the following questions.**

	5. Strongly Agree	4.	3.	2.	1. Disagree
1. The mentors acted as positive role models.					
2. My work with Project SWEEP will deter me from committing crimes in the future.					
3. Project SWEEP made a positive impact on my life.					
4. I enjoyed working on the community projects.					
5. I felt bad about the violation that I committed.					

Remember to forward your completed community hours to:

Waukesha Municipal Court  
Attn: Becky Ehrmann  
201 Delafield Street  
Waukesha, WI 53188  
Fax 262-650-2570

*(Good-bye letter – sent to juveniles who complete project)*



The mentors of Project S.W.E.E.P. have enjoyed their time with you during your hours of community service.

Your participation in Project S.W.E.E.P. has made a significant difference for the City of Waukesha and the participating non-profit agencies. Project S.W.E.E.P. has created several partnerships with agencies that can provide additional services/ resources.

**Big Brothers Big Sisters of Metro Milwaukee**

*(Serving Milwaukee / Waukesha)*

414-258-4778

**Community Outreach Counselor**

Jenny Hawes

262-547-0769 EXT 110

*(Create plans to not re-offend and resources to find a job, help with homework, and to find safe activities.*

*Counseling services also available – all services at no charge.)*

**For additional comments or questions about Project S.W.E.E.P., please contact:**

Linda Evanoff

Project S.W.E.E.P. Coordinator

(414) 303-6665

Officer Tim Probst

Waukesha Police Department

Project S.W.E.E.P. Creator

(262) 524-3831

# Appendix B



## Mentor / Leader Element

## **Mentor / Leader Element**

### **From the beginning.....**

When the concept of Project S.W.E.E.P. was presented to the Waukesha Citizens Police Academy Alumni Association (W.C.P.A.A.A.) at their annual 2006 summer picnic, 32 alumni members subsequently volunteered to become mentors. Since that date, several other Alumni members have been intrigued by becoming a mentor and joined the Project S.W.E.E.P. staff. Project S.W.E.E.P. has also had the opportunity to recruit potential mentors during the Citizens Police Academy. The students are informed about the mentors dedication to the juvenile municipal offender and how the program is affecting the City of Waukesha and the associated community partners. The W.C.P.A.A.A.'s quarterly newsletter regularly informs the current alumni members with the most up to date Project S.W.E.E.P. news and invites them to become a mentor.

### **Establishing the Rules**

As Project S.W.E.E.P. began the adventure of mentoring juveniles, the Project S.W.E.E.P. staff recognized the need to establish rules for the mentors. Before the rules were established, some mentors engaged in less than desirable behavior in front of the juveniles. Notably, there were complaints of the mentors smoking and using profanities in front of the juveniles. The Project S.W.E.E.P. staff created "**Project S.W.E.E.P. Rules for W.C.P.A.A.A. Mentors**" (*See Attached*) and provides a copy to each new mentor.

### **Communication**

Linda Evanoff, Project S.W.E.E.P. Coordinator, communicates with the other mentors over email requesting a need for mentors at particular locations and dates. When the community service event is complete, a mentor provides a report to Linda, which includes the juveniles who were present and a behavior report when necessary. This report is then forwarded to Officer Probst, in order to manage the project and maintain statistics. Email has been the most effective and efficient way to communicate with the mentors.

### **Asking for LEADERS to step forward**

The Project S.W.E.E.P. staff believed some mentors needed to be awarded for their dedication to the program and were assigned the title "Leader." The mentor agreed to the Leader assignment before they were officially assigned to assure they were interested in the additional responsibilities. The Leader is responsible for providing an attendance report to Linda Evanoff, opening and securing facilities, and assuring that all needed supplies are at each of the locations.

Many of the Leaders have taken ownership of certain community service locations and volunteer at the same location each week. "**Leader Protocols**" (*See Attached*) were established to assure that there was uniformity between each of the leaders when encountering juvenile behavioral problems and reporting issues to the Project S.W.E.E.P. staff.

As a reward for their stellar dedication, Officer Probst purchased windshirts for each of the Leaders. The windshirts are adorned with the Project S.W.E.E.P. logo, the leader's name, and the title "Leader."

### **Continuing education**

As Project S.W.E.E.P. began evolving and growing, the mentors believed they could benefit from additional training. Many mentors were encountering juveniles who struggled with issues / circumstances that the mentors had never experienced. These sessions are well attended, as the mentors strive to become the best mentor possible to the juveniles they encounter.

➤ February 12, 2007

A young adult who previously experienced bi-polar episodes explained what he was experiencing, how he felt during the episodes and how people should deal with someone with a bi-polar disorder.

#### **AND**

Jane DeGeorge, Program Director for Waukesha County Mental Health Association, advised the Project S.W.E.E.P. mentors of the mental health resources available to the juveniles and to any citizen of Waukesha County.

➤ February 26, 2007

Municipal Judge Cook and Officer Probst explained Project S.W.E.E.P. Process from the issuance of the municipal citation to the juveniles' appearance at municipal court to their first community service work shift with Project S.W.E.E.P.

➤ November 13, 2007

Jenny Jones, Community Educator of UW-Extension. Trained group in poverty simulation and explained why juveniles behave and act they way they do because of their surroundings, family life, and environment.

### **A way to say THANKS!!!!**

The mentors of Project S.W.E.E.P. and their significant others were treated to an Appreciation Dinner at La Casa de Esperanza on June 7, 2007. Gift certificates and small gifts were donated by the non-profit agencies and businesses that benefit from Project S.W.E.E.P.'s work. Representatives from each community partner were invited to attend. Judge Joseph Cook

and several community partners shared their appreciation for the mentors and the efforts of Project S.W.E.E.P.

The remaining gift certificates and gifts have been distributed to mentors who have displayed a continued dedication to the project and juvenile municipal volunteers throughout the year.

### **City of Waukesha Police Department Citizen Service Award**

Linda Evanoff, Project S.W.E.E.P. Coordinator, was awarded the City of Waukesha Police Department Citizen Service Award. This award is the highest distinction awarded by the Police Department to a citizen. Linda received this award for her dedication as the President of the Citizens Police Academy Alumni Association and for her commitment as the Coordinator for Project S.W.E.E.P. Linda estimates that she spends approximately 15-20 hours per week while volunteering with the juveniles, coordinating events with the juveniles and mentors, and establishing partnerships with non-profit agencies and city departments. Linda has since relinquished her presidency from the Alumni Association, focusing her attention on Project S.W.E.E.P. S.W.E.E.P. is lucky to have Linda !!!!



### **Volunteer group of the year**

Several City of Waukesha Police Administrators nominated the Project S.W.E.E.P. mentors for the "2007 Volunteer Group of the Year," through the Volunteer Center of Waukesha County. The mentors were recognized at the annual reception but were not the recipients of the award.



# Project S.W.E.E.P. Rules

*For W.C.P.A.A. Mentors*



1. Have fun and enjoy yourselves!!!
2. **Be a positive role model / mentor.** Some of the juvenile community service volunteers need a positive influence in their lives to redirect their behavior.
3. Profane language is **not** acceptable.
4. Alcohol consumption is **not** acceptable during the hours of community service.
5. W.C.P.A.A. Association members shall not volunteer while under the influence of alcohol or non-prescribed narcotics.
6. Smoking is **not** acceptable behavior around the juvenile municipal offenders. If you are so inclined, please smoke at least 50 yards away from the juvenile and out of their sight.
7. No inappropriate touching.
8. If a juvenile acts up or excessively misbehaves, kindly ask them to leave and notify Officer Probst of the incident. The discipline will be handled by Officer Probst and Judge Cook.
9. Transportation to and from community service opportunities, is the responsibility of the municipal offender. W.C.P.A.A. Association members shall not transport any juvenile.
10. Do not allow the municipal juvenile offenders to operate powered equipment, handle chemicals, or leave their feet (i.e. climb ladders, scaffolding, fences, etc.)
11. If a community service volunteer or a member for the W.C.P.A.A. Association receives a monetary donation for their services, please decline or donate money to the W.C.P.A.A. for S.W.E.E.P. supplies.

# Appendix C



## Supporting Documents

Community Voices

## Maple & Main

[Curt Otto](#)



Curt is Chicago native – but don't hold that against him. After stops in Madison and California, he and his wife moved to Waukesha in 2004 to open their own downtown business.

[MORE ABOUT CURT](#) | [E-MAIL CURT](#)

WEDNESDAY, Nov. 29, 2006, 4:03 p.m.

## Operation Clean Sweep

A few Saturdays ago, my wife and I headed out the door and down to our usual weekend breakfast destination, Dave's Restaurant, on Broadway.

As we meandered down Main, I couldn't help but notice something different about the streets, however, I couldn't put a finger on it right away.

Was it the Christmas decorations on the lampposts?

No.

Was there more traffic than usual?

Nuh uh.

Less?

Not that either.

But something was definitely different.

And then, it dawned on me.

The streets looked clean- I mean REALLY clean.

Now, don't get me wrong- it's not like Main Street is always a trash-ridden mess (although it has it's days). However, downtown sees a lot of traffic in a day, and that can take a toll on its cleanliness. And on windy days, Main Street seems to be the final destination for all of the trash in the entire City of Waukesha.

That's just the way it is.

But on this day, the streets were spotless, the curbs were free of debris and the parking lots were without their usual trash.

It was impressive to say the least.

What was even more impressive was the reason behind the neat streetscape.

It's referred to as "Operation Clean Sweep"; a Waukesha Police Department program that joins community volunteers with kids who are currently "involved in our City's legal system" to assist in keeping the City landscape clean and tidy. They are currently working in conjunction with the Downtown Business Improvement District and concentrating their efforts on the downtown area.

And they are doing a great job.

Nothing makes people feel welcome and safe like a clean city.

From talking to the officers and volunteers involved, I got the impression that this was a relatively new program, but it appears that the initial run has been successful, thus leading me to believe that "Clean Sweep" will continue its efforts in the future.

I can only hope so.

As someone who has blogged his fair share of negative things about Waukesha, it is a program like this, with this kind of result, that rebuilds my confidence in this City.

The entire operation deserves a hearty "thank you"- the Police, the volunteers, the kids, the BID, and any others involved that I missed.

The streets look great, and downtown is a better place for it. It's good for the City and it's good for business.

Thank you.



Submitted photo

Juveniles in the Project SWEEP program are seen clearing snow in advance of the Waukesha Art Crawl in the Five Points on Dec. 2. The program allows juvenile municipal offenders a chance to do community service in lieu of paying fines.

## Police youth program aims for clean SWEEP

### Project for juveniles allows service instead of fines

By BRIAN HUBER  
Freeman Staff

WAUKESHA — When Vinnie Van Oppen received two citations after ditching some classes at Waukesha North High School this fall, he was faced with a choice: Pay two fines of \$109 each or perform community service, possibly bettering himself in the process.

Through Project SWEEP a new community service program for juvenile municipal offenders, Van Oppen was teamed with an adult while he worked 30 hours on tasks like clearing streets and police cars and helping people with difficulties take care of their yard work.

Along the way Van Oppen said he gained new perspective on things and struck up a friendship with police officer Tim Probst, the architect of Project SWEEP. And Van Oppen said, he's learned to "watch myself better."

"They led you in the right direction," Van Oppen said. "It wasn't your normal community service."

### A choice to serve

Project SWEEP — which stands for Service Willingness Encourage Empower & Policing — was initiated about two months ago after both the police department and municipal court signed on to it. The program offers juvenile offenders in the municipal court the opportunity to do community service instead of paying their fines. The youths are given a set amount of hours to work at various projects under the supervision of adult volunteers.

Youths are referred to Linda Eganoff, co-coordinator of the Waukesha Citizens Police Academy Alumni Association, who matches them up with agencies that need work done, like the Interfaith Caregiving Network, the Humane Animal Welfare Society and the police department. Partnerships with the Food Bank of Waukesha County and the Graffiti Erasers program are on deck, as well, Probst said. SWEEP participants detailed the parade route the day of the city's Christmas parade and also cleared snow for the Art Crawl on Dec. 2.

So far Van Oppen and six others have completed their SWEEP assignments and 16 are still active in the voluntary program, with 30 other youths who have expressed interest.

"We have stuff planned into February already," Probst said. "The different thing about this program is a lot of times when judges hand out community service, they usually don't have numbers available to make sure the kids get their hours in."

Eganoff said most of the youths in the program are thankful for the chance to do community service instead of paying a fine. Of the 37 members of the Citizens Academy Alumni group, 32 are signed up to work as SWEEP members, and about 18 of them have actively participated, she said.

"We have a whole slew of volunteers and they just keep calling and working over and over" she said. "It's fun. I love working with these kids. They are from all walks of life and all ages. And it's really fun when you get through to one of them."

Municipal Judge Joe Cook said the basic idea of community service has been around for a long time, and when Probst pitched Project SWEEP to him, he was intrigued. So far, the results have been "excellent," he said.

"The court will support that 100 percent because it gives something back to the community and it makes kids socially responsible for their actions, and if the community can benefit from that, let's try it. And it's worked fine," Cook said. "In fact, the parents have been probably more receptive. They think this is holding the child accountable for their actions and not just paying a fine and walking away from it and they

think that's very good."

Some of the offenses for which a child could find his way to SWEEP include truancy, carrying concealed weapons, retail theft, possessing drug paraphernalia or smoking materials, disorderly conduct and curfew violations. There is nothing to limit a youth from going through the program more than once.

"I think the kids like it," Cook said. "It gives 'em a second chance."

### Seeing results

Van Oppen's mother, Cheryl Gibson, said she has seen the positive impact the program has had on her son, who previously had been in a share of trouble in life. "Just minor stuff." Now, although his term of service ended weeks ago, Van Oppen continues on with his service of his own free will, she said.

"I think it was an excellent program," she said. "What it has done is it has exposed my son to some adults who have another perspective that maybe he will listen to, and probably the best thing that happened is he met up with this officer, Tim Probst. Who has taken a liking to him, taken him under his wing, and Tim, I understand has joined Big Brothers as a volunteer ... and we are in the process of having that done for Tim to be Vinnie's Big Brother."

Probst said, "I don't need to give him another outlet."

"Kids who we feel have an extra need, were going to refer them to Big Brothers Big Sisters with the permission of their parents," Probst said.

# WAUKESHA COUNTY

**Police Reports:** News from community police blotters. **2W**

**Lorayne Ritt:** "Sizzle 'n' Swank" marks 40th Elm Grove Junior Guild auction. **3W**

**News Summaries:** A roundup of the week's top stories. **4W**

*"This project came to light because I did not believe juveniles were being held accountable for their actions."*

Police Officer Tim Probst, the main organizer of SWEEP



WILLIAM MOYER / WISCONSIN JOURNAL SENTINEL

Youthful offenders in Waukesha get a chance to work off their fines for minor offenses ranging from truancy to alcohol possession as well as more serious ones under the SWEEP program. Waukesha Police Officer Tim Probst organized the program to create more accountability on the part of the kids.

# Clean, accountable

## Youthful offenders work off fines, take on responsibility

By DARRYL ENRIQUEZ  
Staff Writer/Photo Editor

**W**aukesha — No cell phones. No iPods. No lip. Seven youngsters 12 to 17 gathered on a cold spring break day at a downtown coffee shop to work off their court-ordered punishment by sweeping parking lots and collecting trash from the banks of Fox River and the Riverwalk.

Non-violent juvenile offenders are referred to the program, called Project SWEEP, generally by Waukesha Municipal Judge Joe Cook.

Instead of paying a penalty, youthful offenders can work off their fines by performing public service.

"This project came to light because I did not believe juveniles were being held accountable for their actions," said Police Officer Tim Probst, the main organizer of SWEEP, which stands for Service, Willingness, Encourage, Empower, Policing.

"In many cases, the parents of the juvenile paid the citation."

"In other cases, the juvenile would not pay the citation and would choose to not complete their community service. I believe they failed to complete their hours because there were not appropriate outlets, many of the juveniles were too young to volunteer and they lacked the encouragement to complete their obligation."

Most referrals to the program are for youth who were truant, possessed tobacco products, violated curfew, drank alcohol and committed other offenses such as disorderly conduct, retail theft, criminal damage to property, obstructing an officer, possession of a controlled substance and possession of drug paraphernalia.

The goals are to lower recidivism, surround youth with good role models, beautify the city and assist non-profit agencies, he said.

There hasn't been a shortage of tasks for the 116 youngsters who have entered the program since late last year, Probst said.

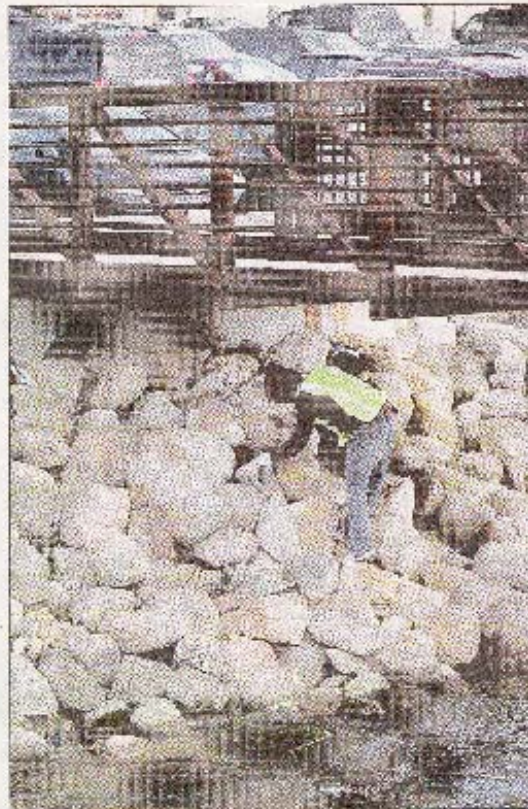
Their tasks include:

- Helping the Business Improvement District with cleaning streets and sidewalks of debris and snow, especially during art crawls, bicycle races and parades.

- Weekly cleanings at First Congregational Church, of police vehicles and the Food Pantry of Waukesha County.

- Regular cleanings of the Police Range and clear up trash from city parks, bike paths and the Riverwalk.

Partnerships that are forming include ones with Graffiti Erasers, the Donna Lexa Community Art



Probst (left) and Linda Evanoff, who helps find mentors for the young people referred to the program, pass out plastic bags to the youths who will be spending their morning picking up trash and debris along the banks of the Fox River.

Please see SWEEP, 2W

From page 1

## **SWEEP**

# Cleaning the city, their records

Center and Interfaith Caregiving Network (helping with "Spring Ahead Day"), Probst said.

What sets this program apart from similar court-ordered community service is that kids are assigned a mentor who accompanies them to their tasks, said Linda Evanoff, the program's volunteer coordinator.

The Waukesha Police Citizens Police Academy Alumni has supplied 32 volunteers to help with the project, she said.

The academy is a multi-week course held by the Police Department for civilians who want to learn more about law enforcement.

Mentors get training from mental health experts and police officers on how to properly handle their assigned kids, Probst said.

About 99% of program referrals come from Cook.

The remainder come from social workers and parents who have heard about the program, Probst said.

Of the 116 referrals, 37 have completed the program, he said.

Probst predicted the demand for SWEEP services will increase as the pool of volunteers from the county's Huber work-release jail dries up because of a cost-saving initiative of releasing inmates early.

Not every referral is a success story, Probst said.

Some have failed to contact SWEEP about their obligation and others were removed because of excessive absences, poor behavior and involvement in further illegal activity.

The expectations are that participants will be respectful and arrive for their task in a timely manner, Evanoff said.



**Publication:**Waukesha Freeman (Conley);**Date:**Dec 26, 2007;**Section:**Local;**Page Number:**3A

## Project SWEEP reaching out, breaking through Mentors credited with success of program for juvenile offenders

By **BRIAN HUBER Freeman Staff** (Brian Huber can be reached at [bhuber@conley.net](mailto:bhuber@conley.net))

WAUKESHA – If things are looking a little better around town, it's probably more than cosmetic, thanks to the mentors and others involved with Project SWEEP.

The program allows juvenile nonviolent offenders a choice between paying fines for their transgressions or working it off in community service, alongside adult mentors who can also steer youths toward services they might find useful in dealing with whatever problems they face.

Fourteen months after the start of Project SWEEP – which stands for Service, Willingness, Encourage, Power and Policing – some 285 kids have gone through the program. Tim Probst, the Waukesha police officer who was a driving force behind the program, said only about 5 percent of the teens who go through Project SWEEP revisit it.

And Probst said it was the two dozen-plus mentors, alumni of the Citizens Police Academy, who are directly responsible.

"They are really the true success with the program," Probst said. "They are the reason the program is working and the kids aren't reoffending."

Through the program, kids work helping community agencies or doing public service projects with agencies like the Food Pantry of Waukesha County, the Business Improvement District, Interfaith Senior Services, St. John Neumann Church, and the Donna Lexa Community Art Center. Tasks range from cleaning to shoveling sidewalks, helping the United Way in Waukesha County drop fliers promoting its 211 service and more. Youths also clean the police shooting range, allowing officers who once had to do it more time for training, Probst said.

Matt Jendrzejczyk was one of the first mentors working with Project SWEEP, which started with about 20 and now has almost 40 people working with teens. About half of the teens come from single-parent homes, he said, and many lack positive role models.

It takes a couple of volunteer sessions to get kids to open up to the mentors, Jendrzejczyk said, but they usually come to a point where they can talk about what's going on in their lives. The mentors can direct kids to their school police officers, spiritual leaders or other community agencies for help rather than dispensing direct advice, he said.

"The majority of kids, 99.9 percent of them are great kids. They just made a bad choice," Jendrzejczyk said. "I tell them life is about choices. Look at it that way."

Jendrzejczyk said the reasons the program is seeing so much success are the positive role models provided by the mentors, the availability of appropriate resources, and the fact that children are empowered to choose their fate in deciding on a fine or the service.

"We have some kids that went through the program but continued volunteering because they had a good time working with us," Jendrzejczyk said. "That says something about the program that kids want get involved."

Karen Tredwell, executive director of the Food Pantry of Waukesha County, said the Project SWEEP volunteers have been a big help to that agency. They come in twice weekly to clean the facility, which Tredwell

said saves money that would otherwise be used to hire a cleaning service. The volunteers also assisted with some food drives, she said.

She said she was impressed with the professional atmosphere of Project SWEEP.

"The kids are, in general, really good kids, and this gives them a chance to give back to the community when they make a mistake. And I think it puts them in a position to be very successful because the mentors are good about positive feedback and in encouraging tasks they can complete successfully," she said. "We're absolutely delighted to be recipients of their services. It's a great program."

Probst said Project SWEEP was started with the objectives of lowering recidivism, giving kids positive role models and beautifying the city in the process.

"I think we are accomplishing all three goals with those kids," he said.



**Submitted photo** A teen in the city's Project SWEEP program is seen working with a mentor to clean up a downtown street during a recent project. The program allows juvenile nonviolent offenders to choose between paying a fine and working it off as community service. A little more than 14 months after it was formed, Project SWEEP has worked with 285 youths.

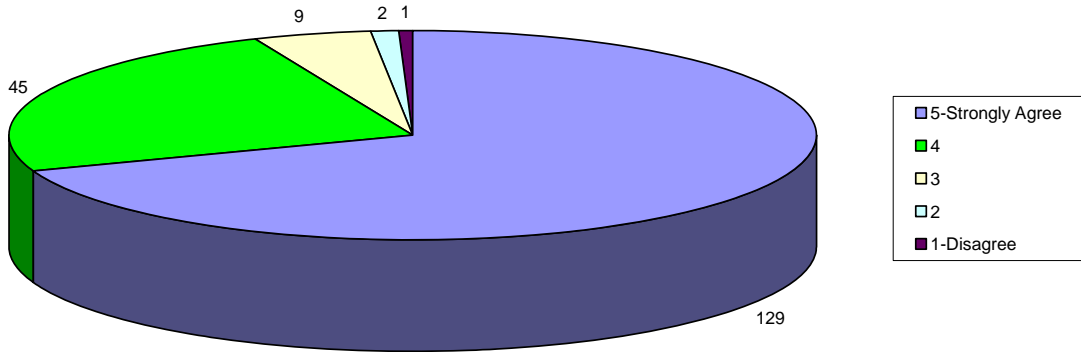
# Survey Results

S.W.E.E.P. continuously collects data from the completed surveys of juvenile graduates. Refer to the following chart responses for details.

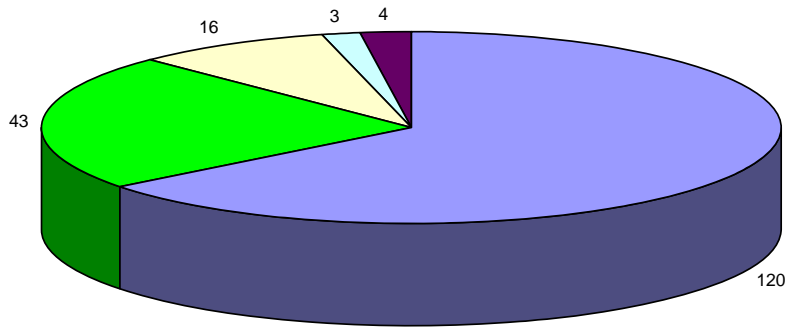
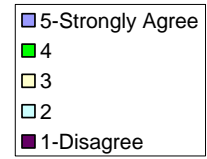
(Surveys submitted as of 05-28-07)



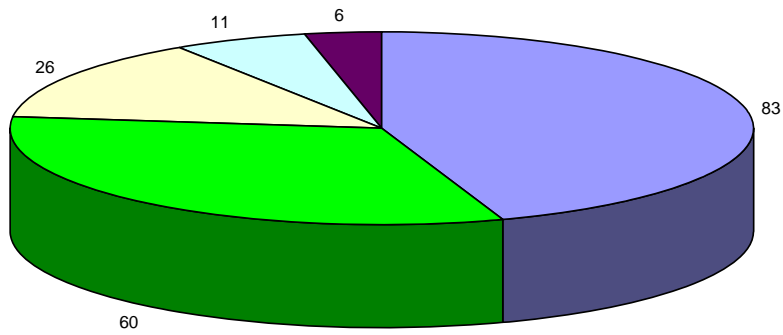
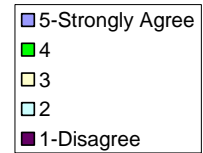
The mentors acted as positive role models



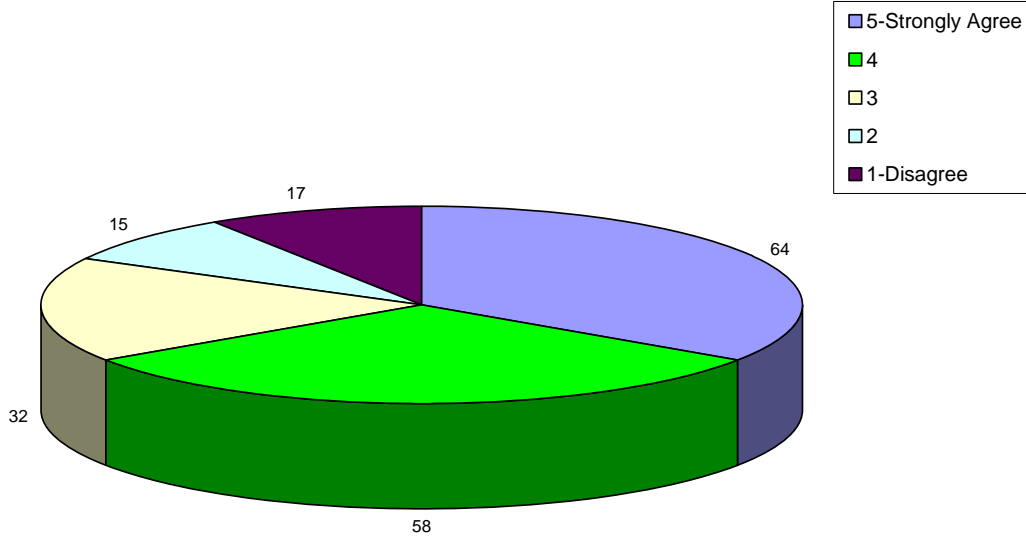
My work with Project SWEEP will deter me from committing crimes in the future



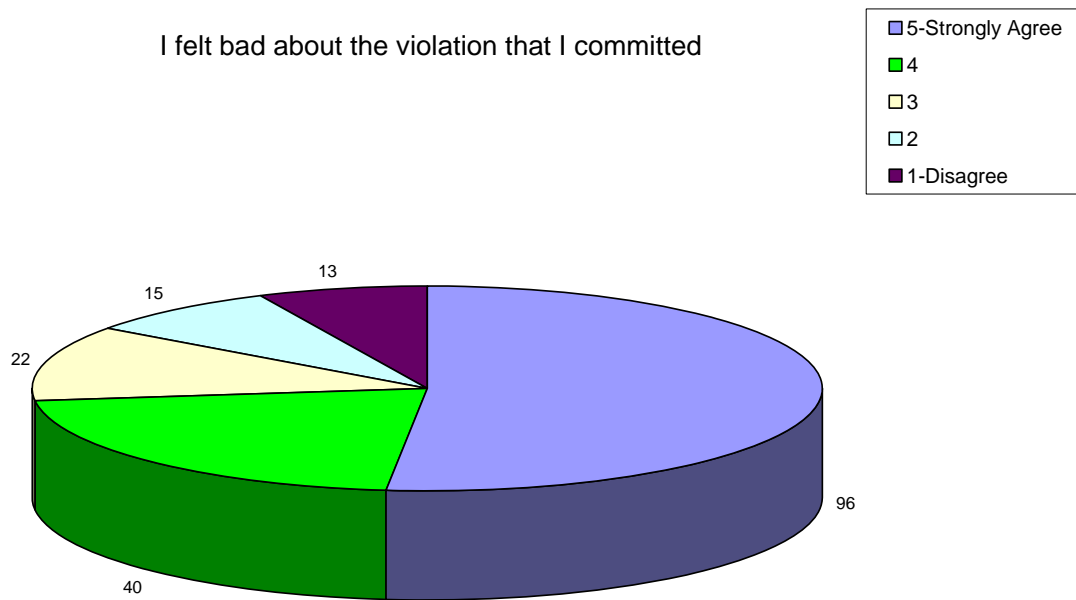
Project SWEEP made a positive impact on my life



I enjoyed working on the community projects



I felt bad about the violation that I committed





---

WISCONSIN

May 23, 2008

Rob T. Guerette, Ph.D  
School of Criminal Justice  
Florida International University  
University Park, PCA 366B  
11200 S. W. 8th Street  
Miami, FL 33199

RE: 2008 HERMAN GOLDSTEIN AWARD

Dear Dr. Guerette:

Please consider this letter as a nomination for the 2008 HERMAN GOLDSTEIN AWARD for excellence in Problem Oriented Policing for the WAUKESHA POLICE DEPARTMENT, WAUKESHA, WISCONSIN.

Our submission for consideration for this award is for our Project S.W.E.E.P. This is a Community service initiative that developed during the Summer of 2006. The premise of this program is to hold juvenile municipal offenders accountable for their actions while surrounding them with positive role models and assisting non-profit agencies and city departments. S.W.E.E.P. stands for: Service, Willingness, Encourage, Empower, and Policing. After many meetings with police administrators, the Municipal Judge, non-profit agencies and city departments, Project S.W.E.E.P. officially began mentoring juvenile municipal offenders on October 18, 2006. The elements and process of the project are constantly reviewed but the goals remain the same.

Project S.W.E.E.P. goals based on analysis:

1. Decrease recidivism.
2. Provide positive role models for the juvenile municipal offender through interaction with a member from the Waukesha Citizens Police Academy Alumni Association (W.C.P.A.A.A.) during each community service event.
3. Beautify the City of Waukesha and assist non-profit agencies.

Most of the juveniles in this program are neglected by their parents, schools, or community and lack positive role models. Many of these children have several things in common; a single parent home, a history of drug or alcohol abuse, behavioral issues,

sexual, physical and/or emotional abuse. The majority of these juveniles have been labeled as "fringe kids," "at risk youths," "kids at a crossroad," or "ones who have fallen through the cracks." Project S.W.E.E.P. ignores all of these labels and seeks to provide leadership for each child.

Project S.W.E.E.P. is a Police/Community initiative that has brought this issue to light and involves many positive role models to these young people that otherwise would never have the opportunity to pattern themselves after these role models, but instead are given the opportunity to "turn" their lives around in order to become "productive" young citizens as well.

The Wisconsin Association of Community Oriented Policing (WACOP) recognized this initiative at their January annual conference and presented the Waukesha Police Department's Project S.W.E.E.P. as the outstanding Problem Solving initiative and presented the 2008 Sir Robert Peel award to our department. The many, many hours of hard work by volunteer role models from our Citizens Police Academy, officers, other citizen volunteers, municipal Judge, etc. are ones who have made this initiative possible and successful.

It is my honor as the Chief of Police for the Waukesha Police Department to present our Project S.W.E.E.P. for consideration for the Herman Goldstein Award for Excellence in Problem-Oriented Policing.

Sincerely,

A handwritten signature in cursive script, appearing to read "Leslie A. Sharrock".

Leslie A. Sharrock  
Chief of Police